

WI-FI STICK GUIDE

STARTUP

CHECKLIST

Please make sure that:

- ✓ Wi-Fi Stick is properly plugged in
- ✓ DC Switch is closed and Inverter is powered.



You should see:

Green LED on **inverter**: ON / Blink - Inverter Power ON.

Red LED on **Wi-Fi Stick**: ON / Blink - Wireless waiting for configuration.

ABOUT WI-FI STICK'S AP SIGNAL


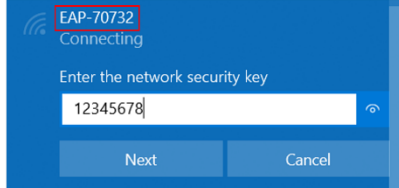
When connected to a working inverter (at least powered on), Wi-Fi Stick generates an **AP (Access Point) Signal** that stays visible and accessible for smart devices, such as **smartphone, tablet, and PC**.

NOTICE

AP Network Signal of the Wi-Fi Sticks does not grant any internet access. You must disconnect your smart devices from the AP signal after configurations.

As shown in the following diagram, AP Signal is coded with an SSID in **EAP-*******, where the suffix part (after hyphen) in SSID is identical to **last 5 digits of the Serial Number (S/N)** of corresponding Wi-Fi Stick.

***Default Password** for Wi-Fi Stick's AP Signal is: **12345678**

WI-FI STICK LABEL	AP SIGNAL
 <p>Wi-Fi Stick P/N: EESW-A404-00 S/N: E470 1197 0732 KEY: LT5H DFAH VXGS XQTK</p> <p>⚠ No rotating the body when disassembling</p>	<p>SSID: EAP- '+S/N' PASSWORD: 12345678</p> 

SAFETY

For cybersecurity of your devices and solar system, we strongly recommend you change the default passwords of Wi-Fi Sticks.

Power generation profile of your inverters will be available once the Wi-Fi Stick has access to internet, e.g. by pairing it to your home WLAN.

Green LED on **Wi-Fi Stick** should light up when all configurations are properly completed, which indicates that the Stick is now uploading data from the inverter to **HiPortal®**, a monitoring platform designed by **HYPONTECH**.

HIportal® MONITORING PLATFORM

DESCRIPTIONS

HiPortal® digitalizes the data uploaded from inverters to power generation profiles and curves. The platform is accessible for users over the globe and available for both web browsers and smartphones.

FOR WEB:

HiPortal® on <https://www.hyponportal.com/signin>

FOR APP:

HiPortal® APP is available from **Apple App Store**, **Google Play**, and **Android APK**. Scan the QR Code below to download **HiPortal® APP** on your smartphone.

*This QR Code is also available on labels of inverter.



HiPortal is constantly updating. Please refer to the latest version of **Wi-Fi Stick Guide** on our website www.hypontech.com.

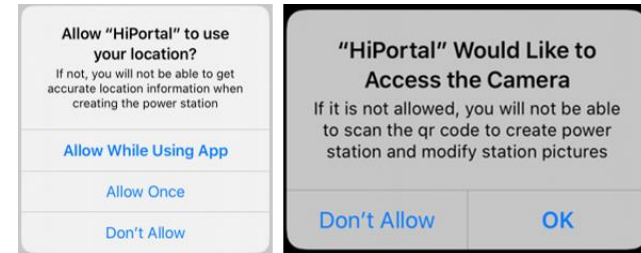
NOTICE

AP Network Signal of the Wi-Fi Sticks does not grant any internet access. You must disconnect your smart devices from the AP signal after configurations.

OPTION A: SMARTPHONE APP

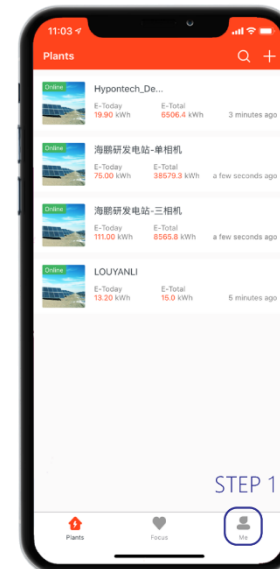
The following steps are demonstrated on iPhone 11, iOS13.5.1, HiPortal® Ver 1.2.0.

When using HiPortal® APP, please allow access to location and camera.

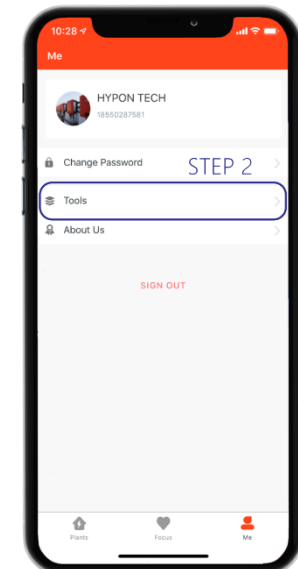


Please note the following steps are only applicable for startup configurations of Wi-Fi Sticks that were never online, and hence never bind to inverters before.

STEP 1. CLICK ON Me



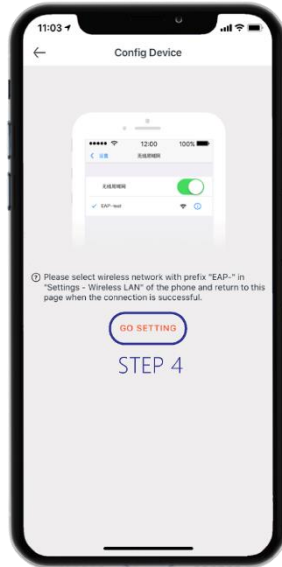
STEP 2. CLICK ON Tools



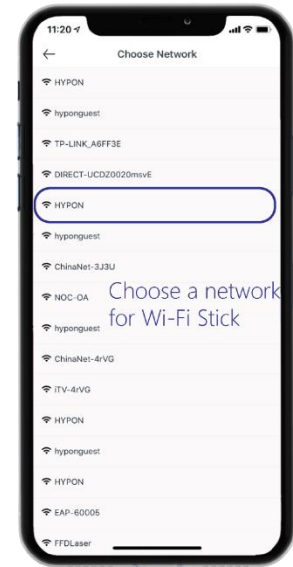
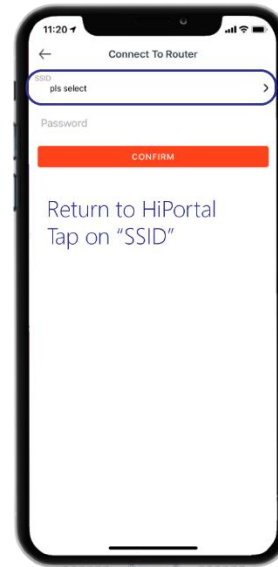
STEP 3. (📶) FIND DEVICE



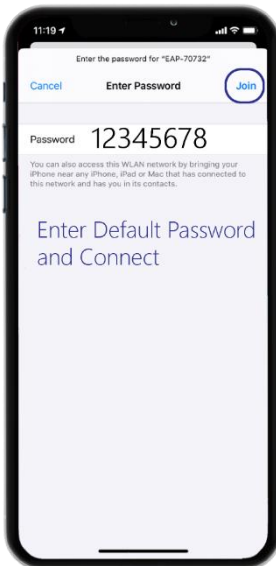
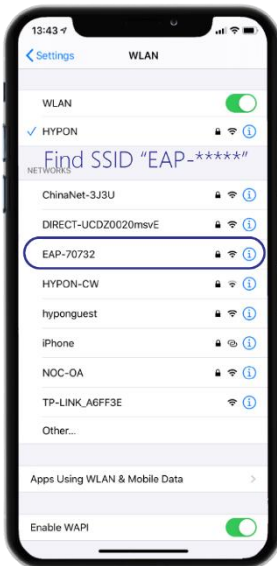
STEP 4. GO SETTING



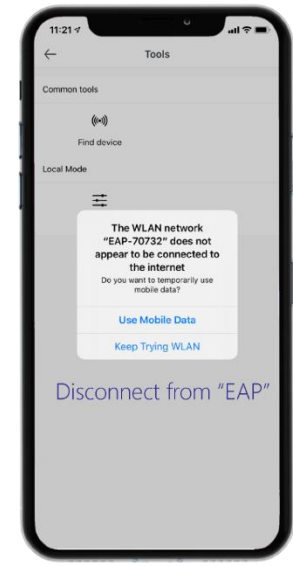
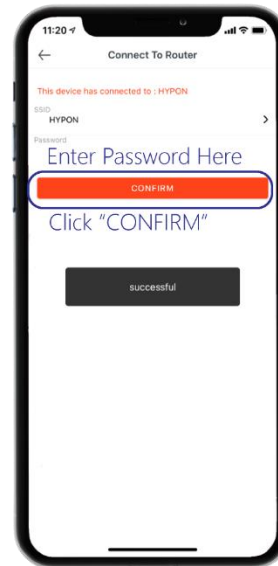
STEP 6. RETURN TO HIPORTAL > CHOOSE NETWORK



STEP 5. GO TO WLAN > FIND SSID "EAP-***" > ENTER 1~8**



STEP 7. ENTER PASSWORD AND CONFIRM > "SUCCESSFUL"



OPTION B: WEB BROWSERS

The following steps are demonstrated on PC Windows10 (64-bit), Chrome V83.

HiPortal® supports most web browsers, such as Google Chrome (Ver 58+), Safari, Microsoft Edge, and Firefox (Ver 49+).

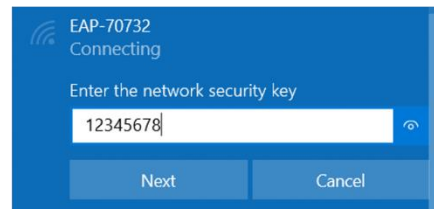
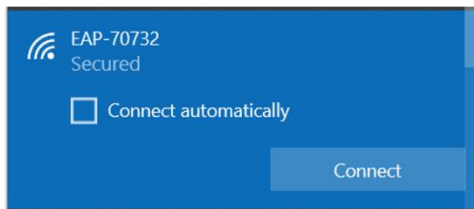
Please note the following steps are only applicable for startup configurations of Wi-Fi Sticks that were never online, and hence never bind to inverters before.

NOTICE

AP Network Signal of the Wi-Fi Sticks does not grant any internet access. You must disconnect your smart devices from the AP signal after configurations.

STEP 1. FIND DEVICE

Find the AP Signal of your Wi-Fi Stick ("EAP-*****"). Enter default password.



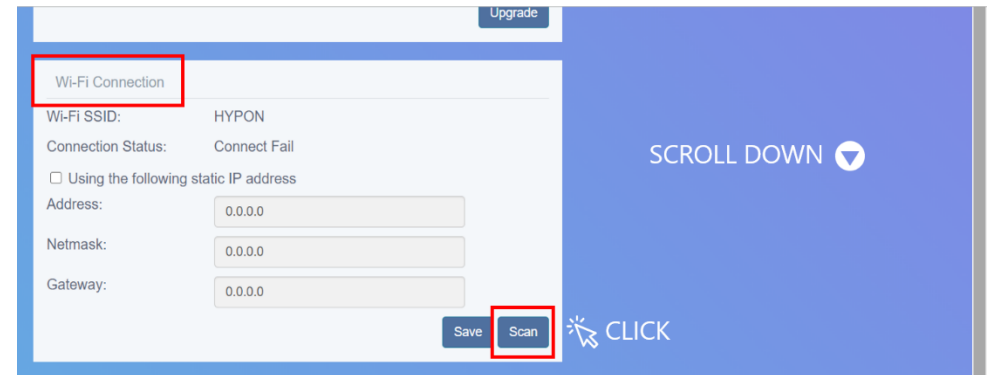
STEP 2. CONFIGURATION PAGE

Open browser. Enter 10.10.10.1 in address bar



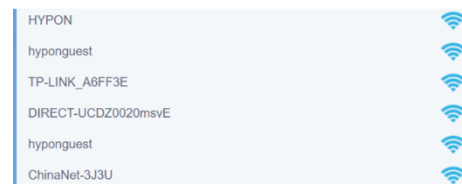
STEP 3. CONFIGURATION PAGE

Scroll down to "Wi-Fi Connection". Click **Scan**



STEP 4. CONNECTION

Select your network.



Enter password and **Connect**



Successful!

