

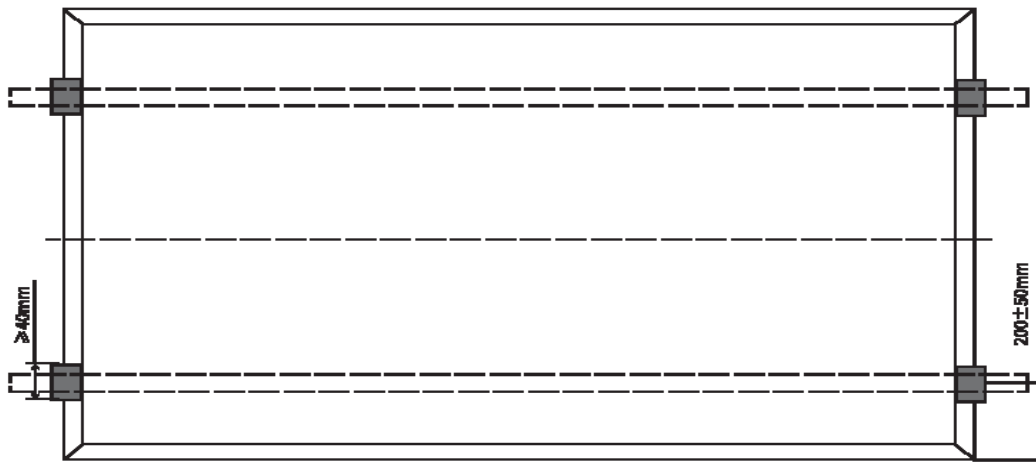
Issue Date: 2022-01-05

Module Type: LR4-72HPH/HBD-*M, LR5-72HBD-***M (***) stands for module power rating)**

Subject: Statement for the KENO clamp installation method

To Whom It May Concern:

We would like to confirm you that the KENO clamp installation method showed at Appendix A can be used to install the referred modules, as long as the Installation Manual for LONGi solar PV module is followed, and the clamp installation shall meet the requirements of LONGi Installation Manual recommended. Attaching the short side clamp installation method of longi recommended for the reference:

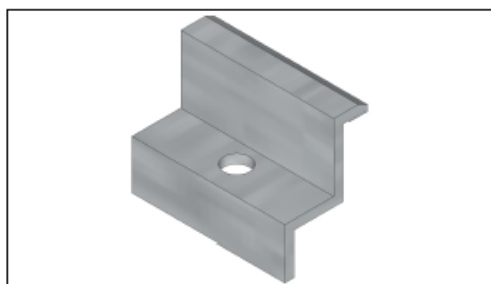
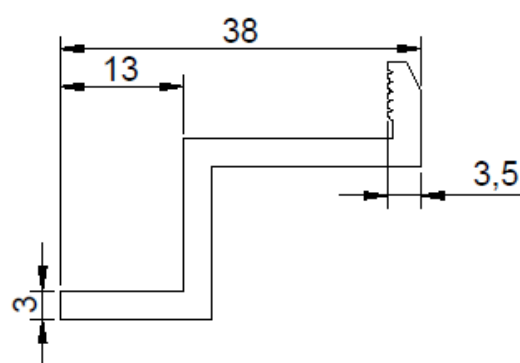
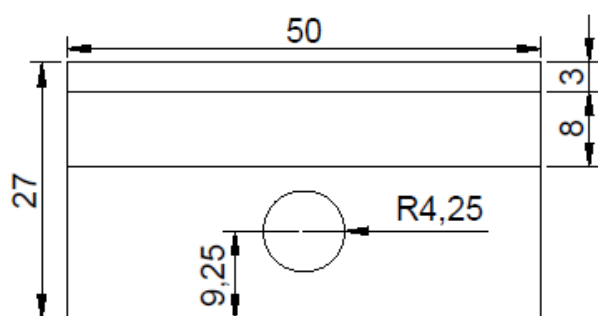


**Short side clamp installation
(clamp length $\geq 40\text{mm}$)**

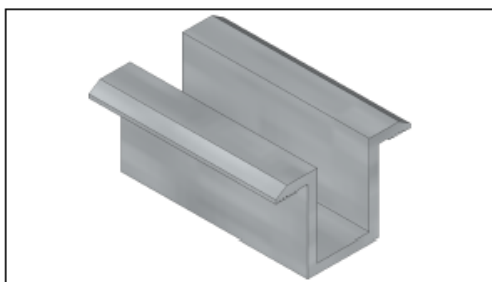
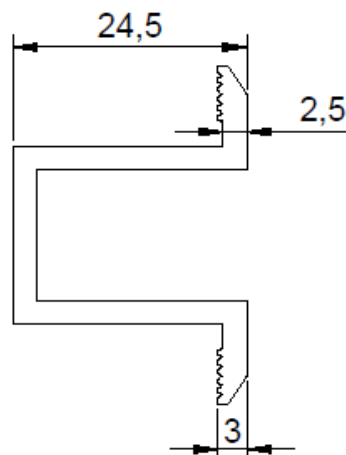
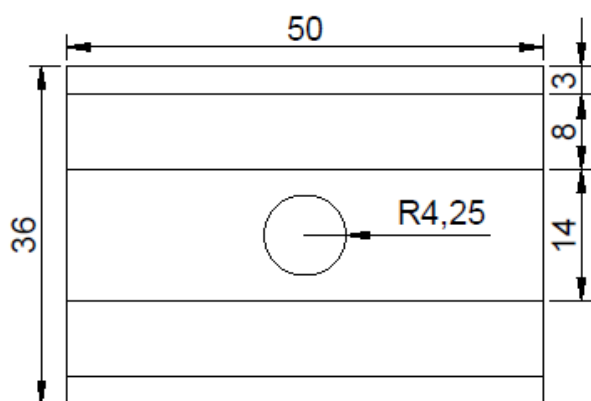
Sincerely

LONGi Solar Technology Co., Ltd.

Appendix 1



Rysunek konstrukcyjny	
Temat rysunku	K-06-35 - klema końcowa 35 mm
Jednostka wymiarowania	milimetr



Rysunek konstrukcyjny	
Temat rysunku	K-05 - klema środkowa uniwersalna
Jednostka wymiarowania	milimetr

