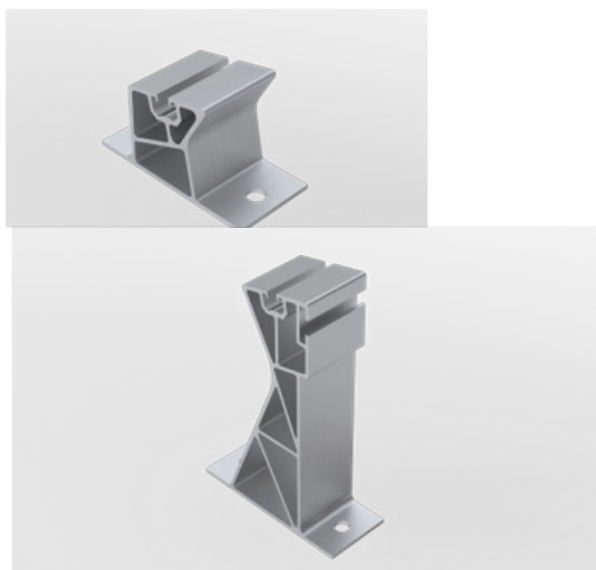


CHARACTERISTIC

Keno sp.z o.o. is pleased to present you a solution for use on roofs covered with a sandwich panel with the use of a structure with rails and K-45 aluminum handles.



- EASY AND QUICK INSTALLATION
- MOUNTING OF MODULES ON THE SHORT SIDE
- ADJUSTMENT ALONG THE RAIL
- POSSIBILITY OF INSTALLATION IN THE H/ SOUTAND EAST-WES

[SEE
CATALOG](#)



DESCRIPTION OF A SANDWICH PANEL CONSTRUCTION WITH LONGITUDINAL RAILS

Keno sp.z o.o. provides a 10-year warranty on the above structure. The structure is assembled by attaching the K-45 aluminum rail to the sheet surface at six points with the K-20 sheet metal screw. The photovoltaic modules are based on the K-45-7 and K-45-8 aluminum holders, thanks to which the structure obtains an inclination angle of 11 °. The design allows the modules to be installed only horizontally

TECHNICAL DRAWING

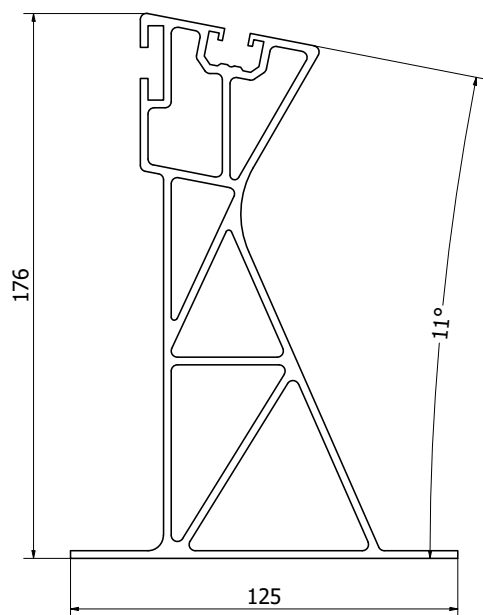


Fig. 1 K-45- high aluminum mounting bracket

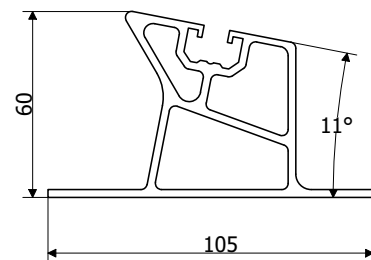


Fig. 2 K-45-8 low aluminum mounting bracket

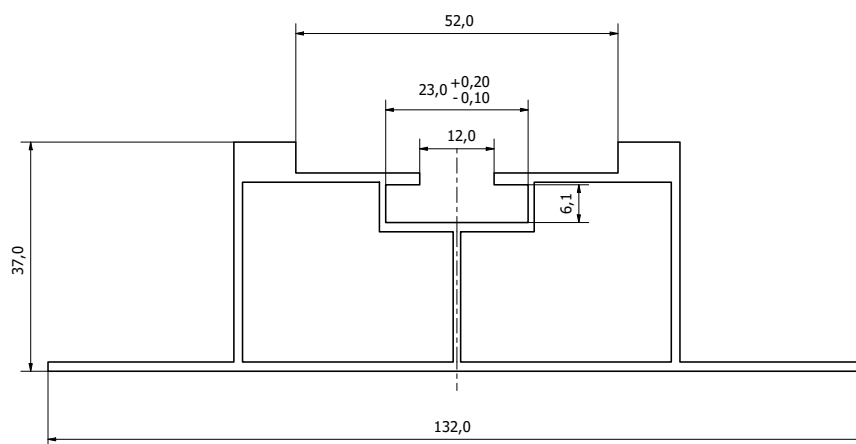


Fig. 3 K-45-1200 / K-45-2400 aluminum rail