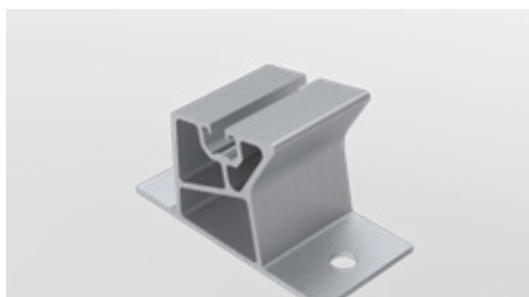
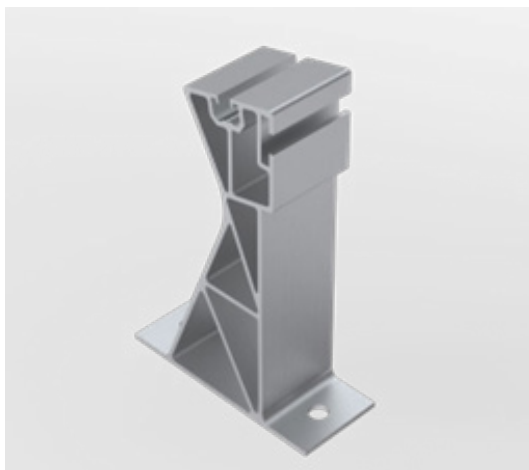


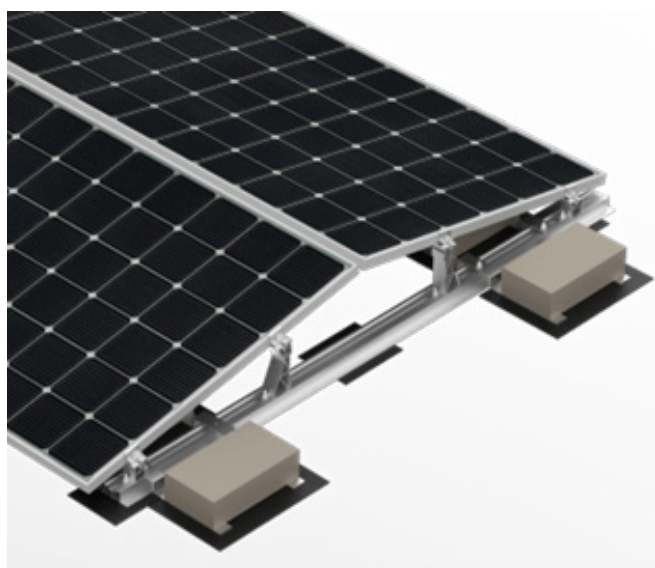
CHARACTERISTIC

Keno sp.z o.o. is pleased to present you a non-invasive solution for flat roofs with the use of a ballast structure with aluminum handles. The structure is dedicated to cases where there is no possibility of interfering with the roof sheathing.



- EASY AND QUICK INSTALLATION
- MOUNTING OF MODULES ON THE SHORT SIDE
- ADJUSTMENT ALONG THE RAIL
- POSSIBILITY OF MOUNTING SOUTH AND EAST-WEST

[SEE
CATALOG](#)



DESCRIPTION OF THE MEMBRANE BALLAST CONSTRUCTION

Keno sp.z o.o. provides a 10-year warranty on the above structure. The assembly of the structure is carried out by weighting the aluminum rails with an appropriate amount of ballast. The photovoltaic modules are based on the K-45-7 and K-45-8 aluminum supports, thanks to which the structure obtains an inclination angle of 11° . The technical department of Keno sp.z o.o., at the customer's request, can calculate the required minimum ballast. For this purpose, specific information on the investment is needed (see table 1). The ballast structure can be used on roofs where the angle of inclination does not exceed 5° . The structure allows for the installation of modules only in a horizontal arrangement.

BALAST CALCULATION

BALAST CALCULATION
1. The exact location of the investment.
2. Roof dimensions + building height.
3. A Module dimensions + weight.
4. Visualization of modules distribution on the roof slope.

TECHNICAL DRAWING

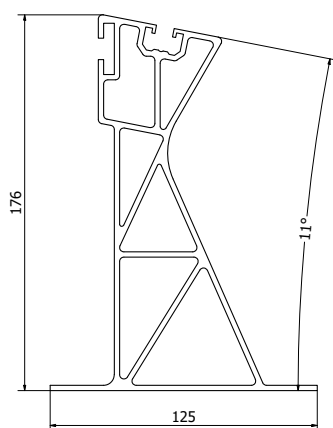


Fig.1 Dimension of K-45-7

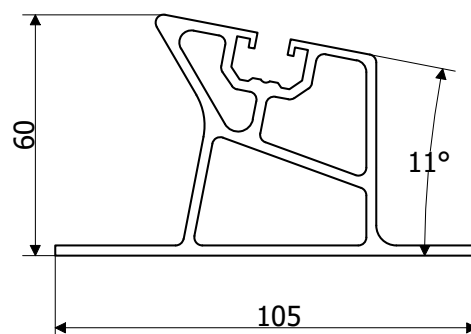


Fig.2 Dimension of K-43-8