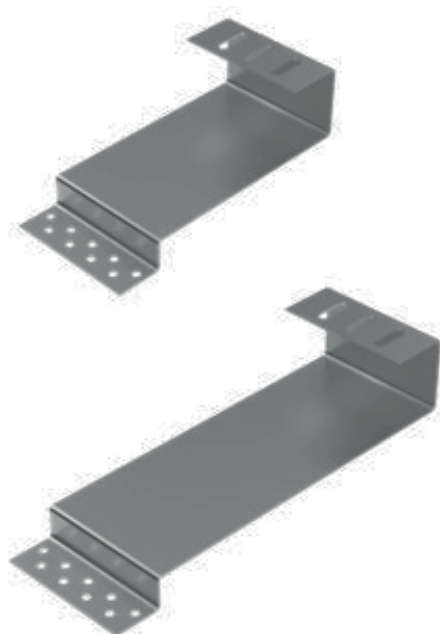




STEEL HOOK K-44 MOUNTING SYSTEM

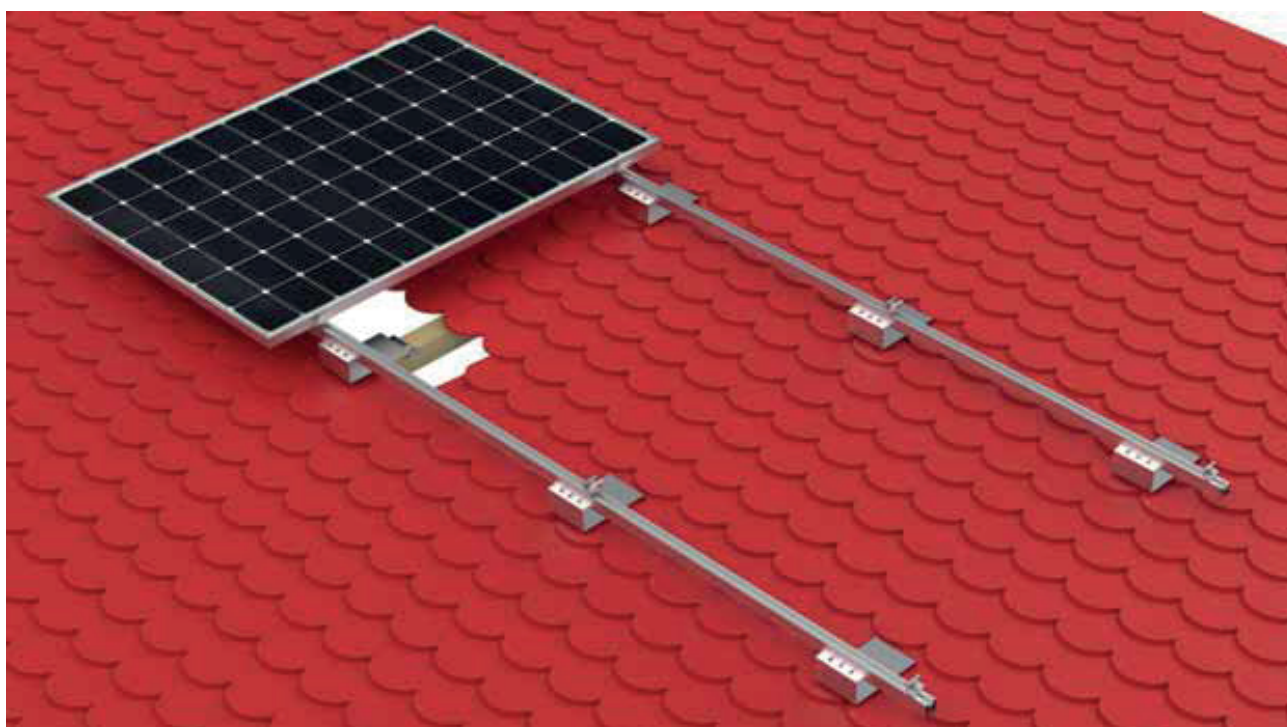
CHARACTERISTIC

Keno sp.z o.o. is pleased to present you a solution that can be used on all plain tile pitched roofs. Thanks to the specially designed shape, there is no need to grind the tile, moreover, the large surface of the grip causes the load to be distributed over the surface of the tile, which protects the roof from damage. The K-44-W hook is an elongated version of the K-44, it allows the installation of the structure in the case of tiles with a non-standard length



- EINSIMPLE AND QUICK
INSTALLATION WITHOUT
INTERFERENCE
- IN THE ROOF TILE
- COMPATIBILITY WITH ROOF
TILES AVAILABLE ON THE
MARKET

[SEE
CATALOG](#)



STEEL HOOK K-44 MOUNTING SYSTEM

DESCRIPTION OF CONSTRUCTION ON A SLOPING ROOF, COVERED WITH ROOF TILES

The hook was made with the greatest care and quality. Keno sp.z o.o. provides a 10-year warranty for the above structure, with the possibility of extending it by 15 years, due to the fact that the element is made of stainless steel. The holder is installed by screwing it to the roof rafters using at least two K-16 screws with a specially designed wood thread. Additional mounting holes allow you to find a suitable point where you can attach the grip to the rafters. The hook is compatible with all mounting profiles available from Keno sp.z o.o. The hook is mounted with the profile using a „T” type screw, which enables the hook to be mounted at any point in the profile.

THE HOOK FAMILY FOR PLAIN TILES			
	K-15	K-44	K-44-W
ANGLE	5°	0°	0°
OVERLAP	250mm	up to 50mm	over 50mm

TECHNICAL DRAWING

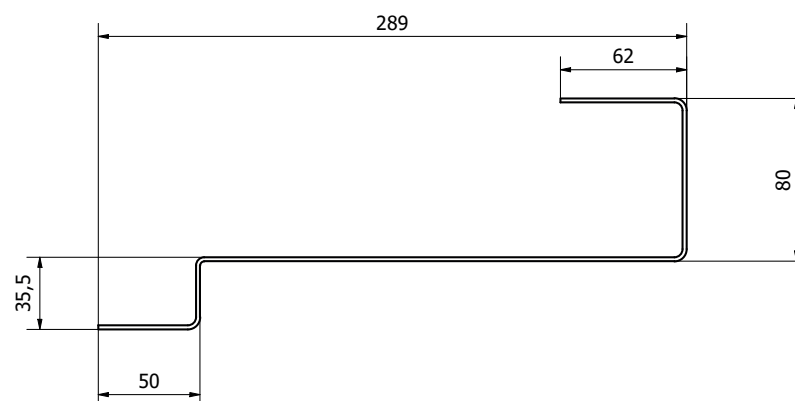


Fig. 1 Dimensions of the K-44 element - side view.

STEEL HOOK K-44 MOUNTING SYSTEM



Fig. 2 Dimensions of the K-44 element - top view.

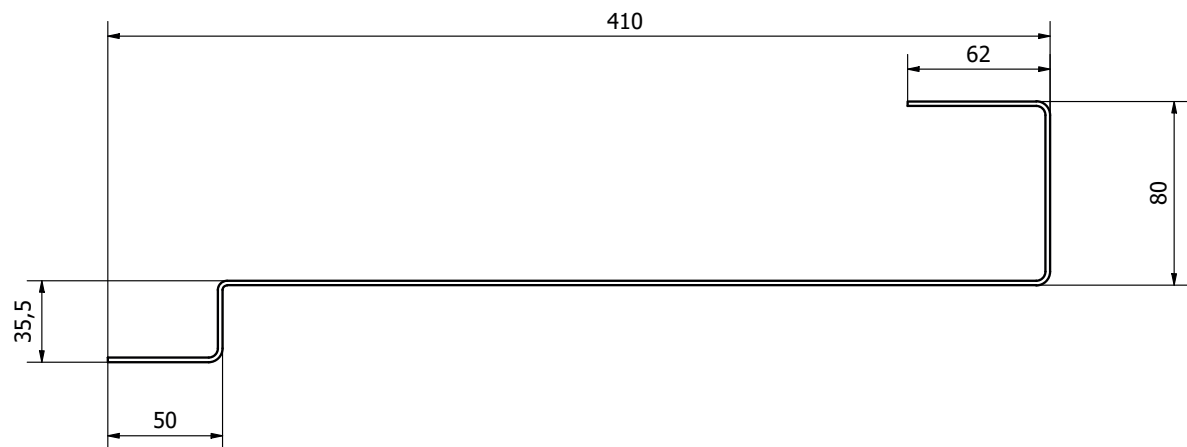


Fig. 3 Dimensions of the K-44-W element - side view



Fig. 3 Dimensions of the K-44-W element - top view