

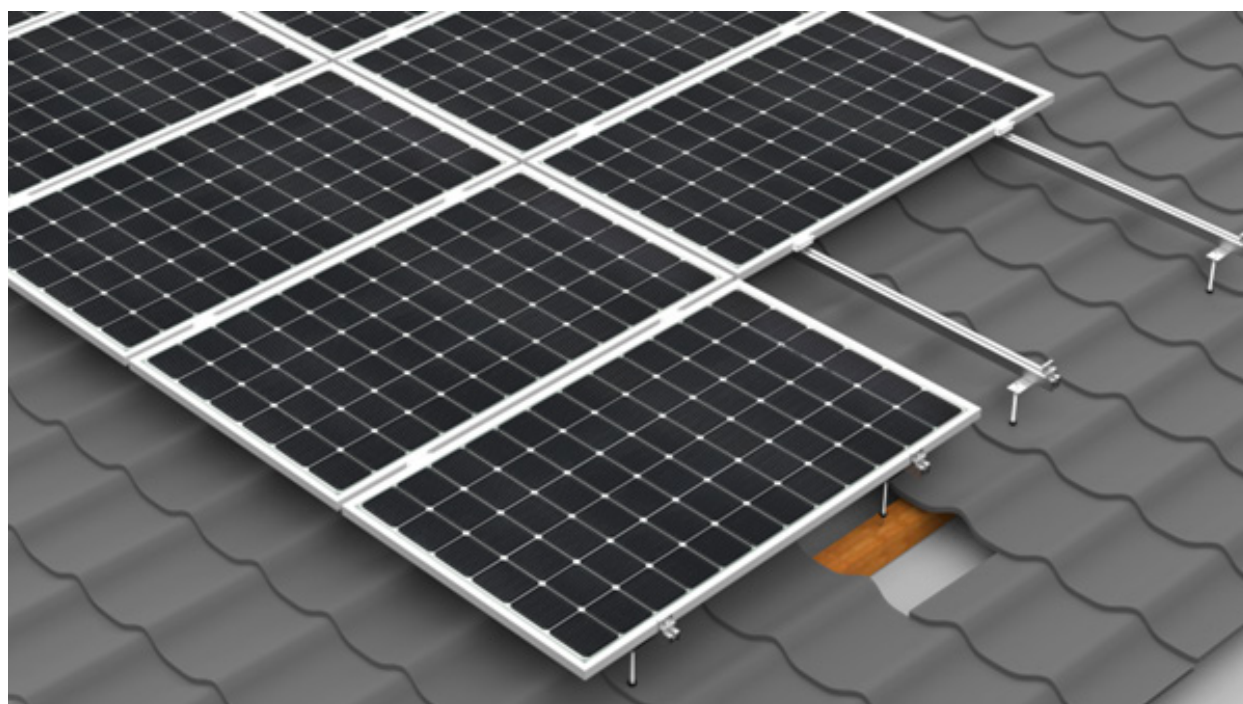
CHARACTERISTIC

Keno sp.z o.o. is pleased to present you a solution for use on all roofs with a wooden or steel roof structure. A structure that allows the roof surface to be leveled, so that the modules will fit parallel to the roof deck



- INSTALLATION DURABILITY
- SEALING THE OPENING
- POSSIBILITY TO CHOOSE THE APPROPRIATE THREAD LENGTH
- INSTALLATION ON ROOF CONSTRUCTION

[SEE
CATALOG](#)



DESCRIPTION OF THE CONSTRUCTION USING HAND-THREADED SCREWS

Keno sp.z o.o. provides a 10-year warranty on the above structure. The structure is assembled by screwing the K-17 double-threaded bolt into the wooden rafters. This element is available in three lengths. We also have a solution for the steel roof structure using K-43 double-threaded bolts, they are available in two lengths (see table below). The profiles are mounted using an adapter (K-03), which enables compatibility with all profiles available in the offer of Keno sp.z o.o.

SELECTION OF HANGERED BOLTS DEPENDING ON THE ROOF DESIGN

K-17 (with thread for wood)			K-43 (with steel thread)	
Minimum rafters dimensions: 80x50mm			Min.thickness of steel rafter	
200mm	250mm	300mm	210mm	270mm

TECHNICAL DRAWINGS



A Fig. 1 K-17 screw for wooden structures



Fig. 2 K-43 screw for steel structures