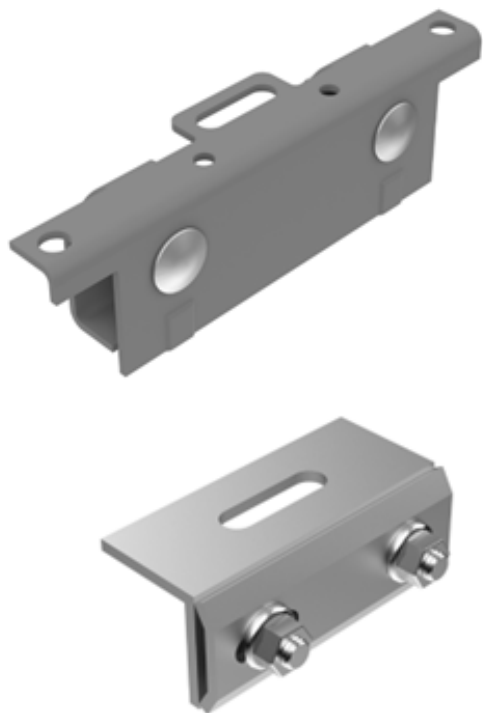


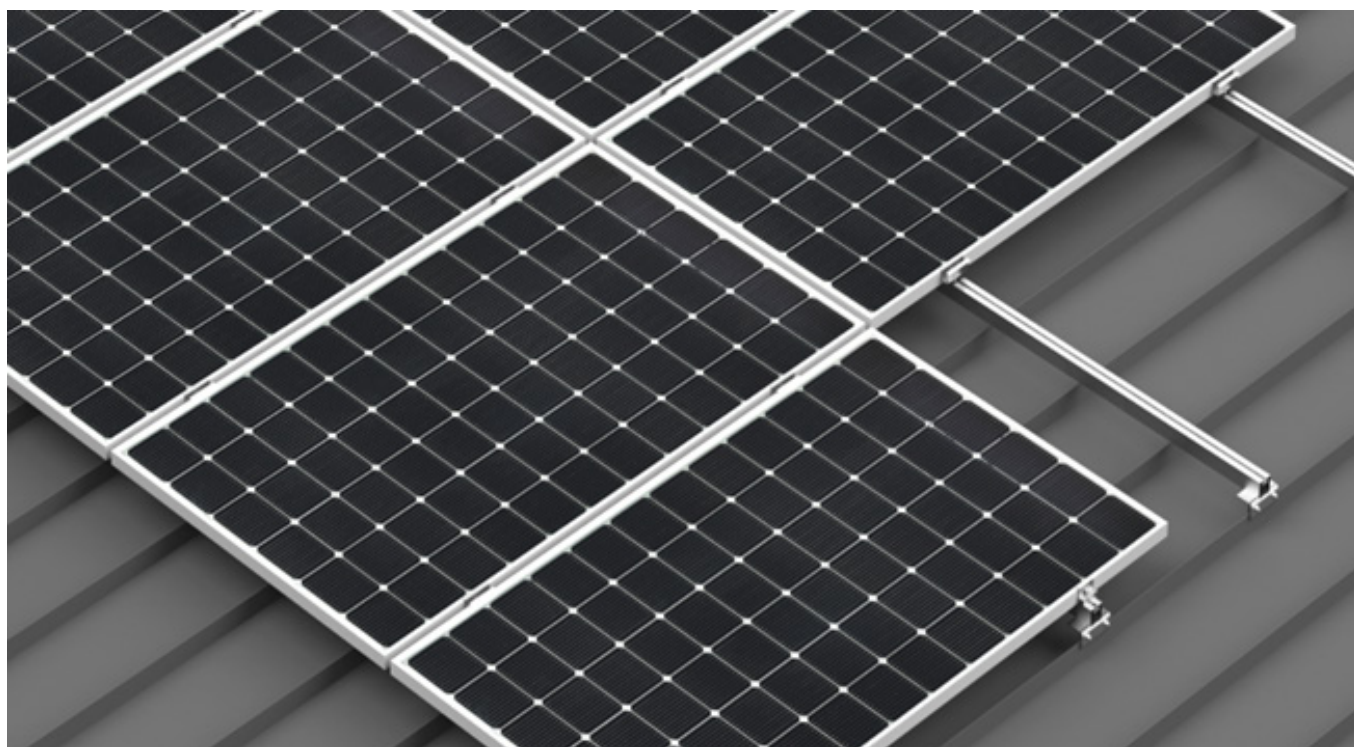
CHARACTERISTIC

Keno sp.z o.o. is pleased to present you a solution for use on sheet metal roofs with a metal seam.



- EASY AND QUICK INSTALLATION
- COMPATIBILITY WITH MOST SEAM ROOF COVERINGS
- MOBILITY WHICH ENABLES INSTALLATION OF THE HANDLE ON THE ENTIRE LENGTH OF THE SEAM

[SEE
CATALOG](#)



DESCRIPTION OF THE CONSTRUCTION ON A SHEET-COVERED ROOF

The handle was made with the greatest care and quality. Keno sp.z o.o. provides a 10-year warranty on the above structure. The seam holders are mounted by clamping them over the seam with two bolts. The handles are compatible with all mounting profiles available in the offer of Keno sp.z o.o. The mounting of the handle with the profile is carried out with the use of a „T-e” type screw, which enables its assembly at any point of the profile.

TECHNICAL DRAWINGS

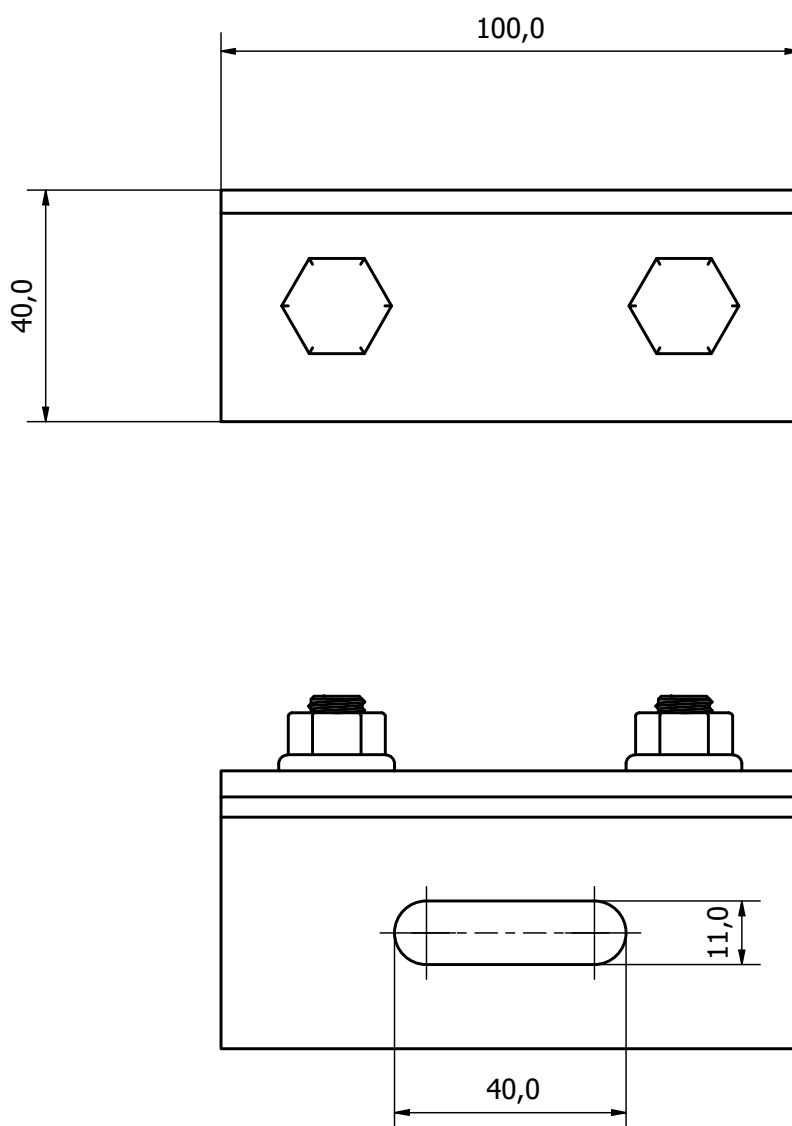


Fig.1 dimensions of K-24-Z

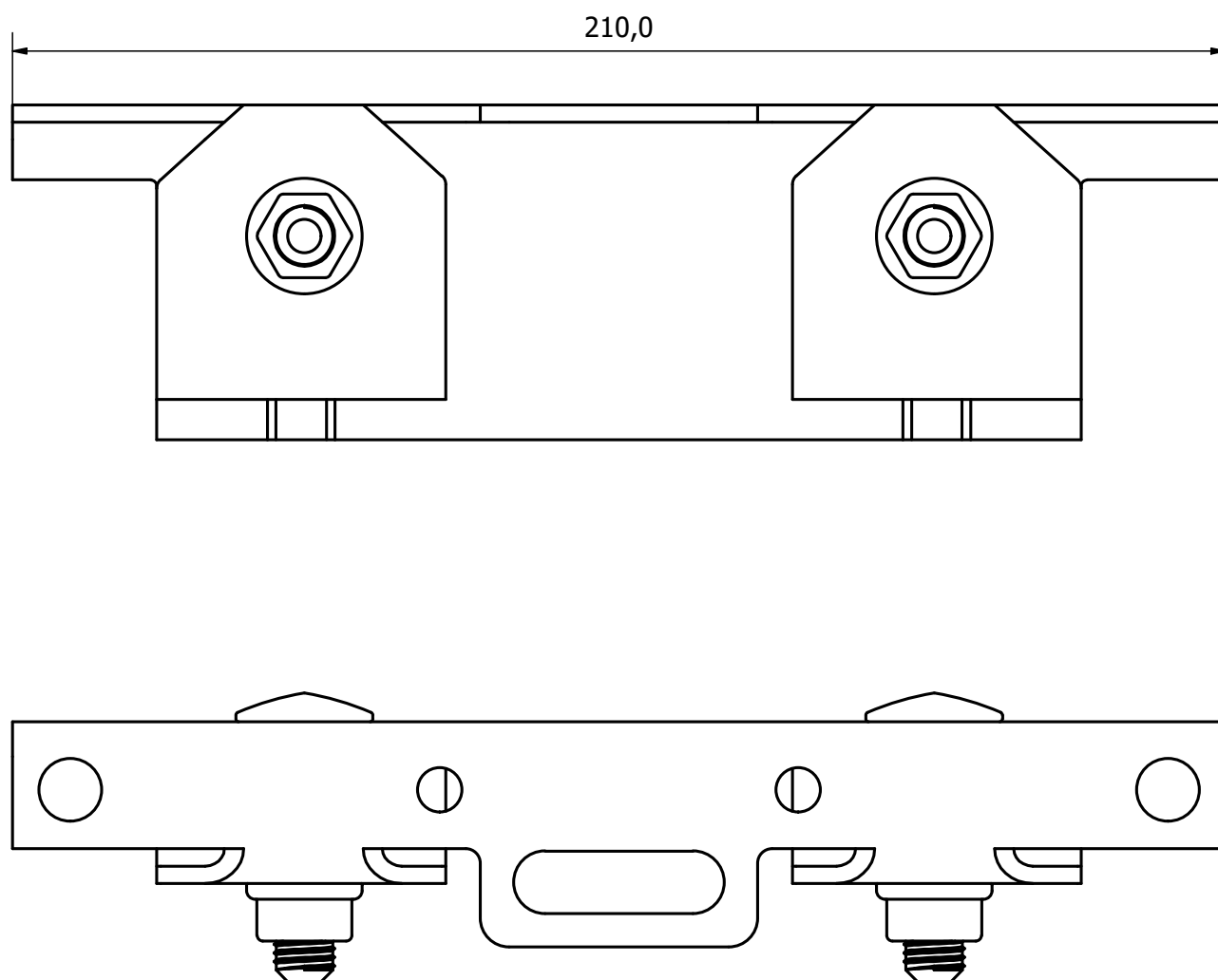


FIG. 2: Dimension of K-24-C