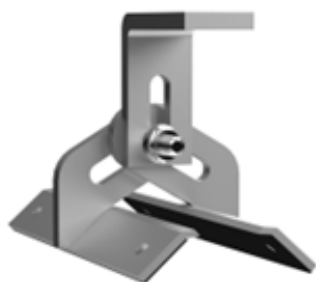


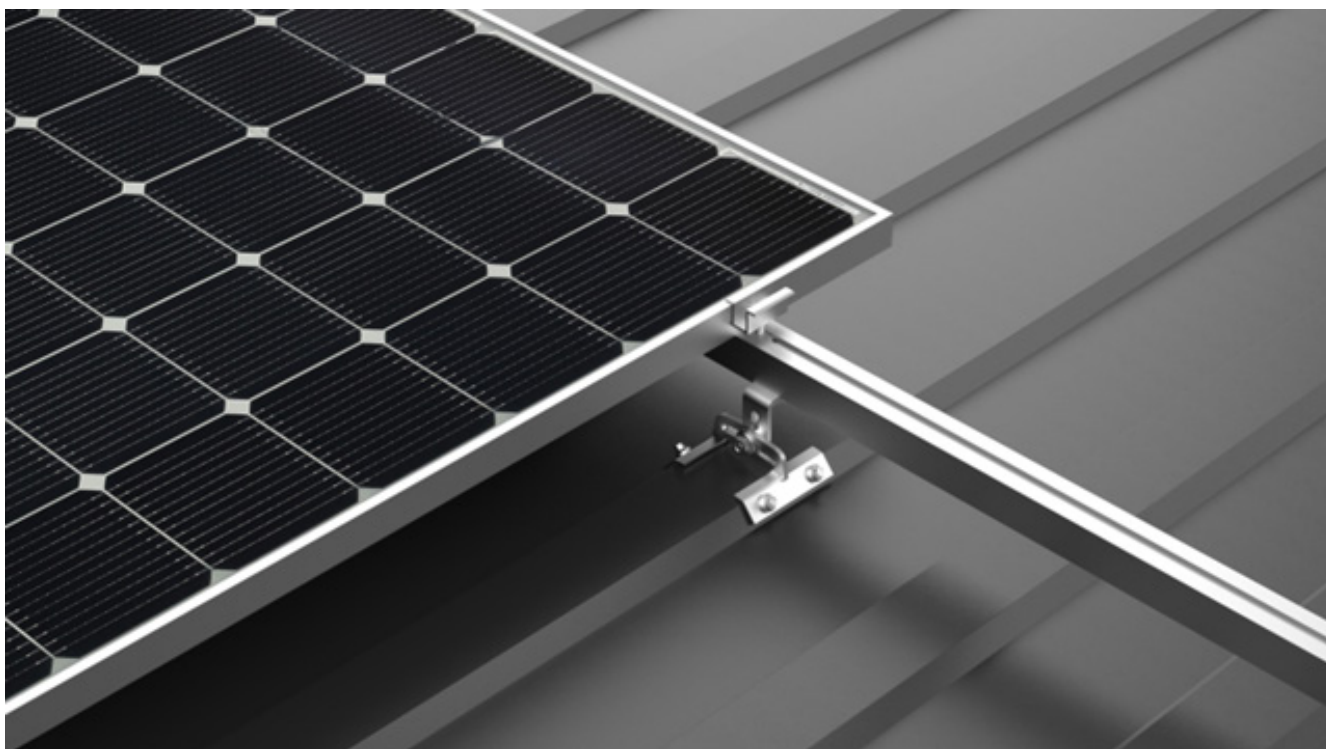
## CHARACTERISTIC

Keno sp.z o.o. is pleased to present you a solution for use on trapezoidal sheet metal roofs.



- EASY AND QUICK
- INSTALLATION  
COMPATIBILITY WITH MOST  
TRAPEZOIDAL SHEETS  
AVAILABLE ON THE MARKET

[SEE  
CATALOG](#)



### DESCRIPTION OF THE CONSTRUCTION WITH A TRAPEZOIDAL HANDLE

Keno sp.z o.o. provides a 10-year warranty for the above structure due to the fact that it is made of elements with all the required certificates. The structure is assembled by screwing the K-13 holder (see Figure 1, Figure 2) to the sheet surface, using four K-20 sheet metal screws. The design is compatible with all mounting profiles available from Keno Sp.z o.o.

### TECHNICAL DRAWINGS

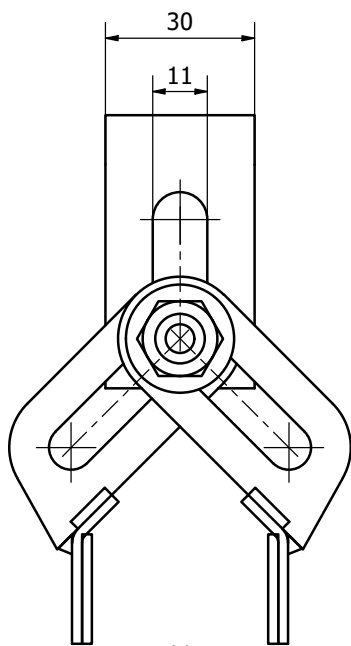


Fig.1

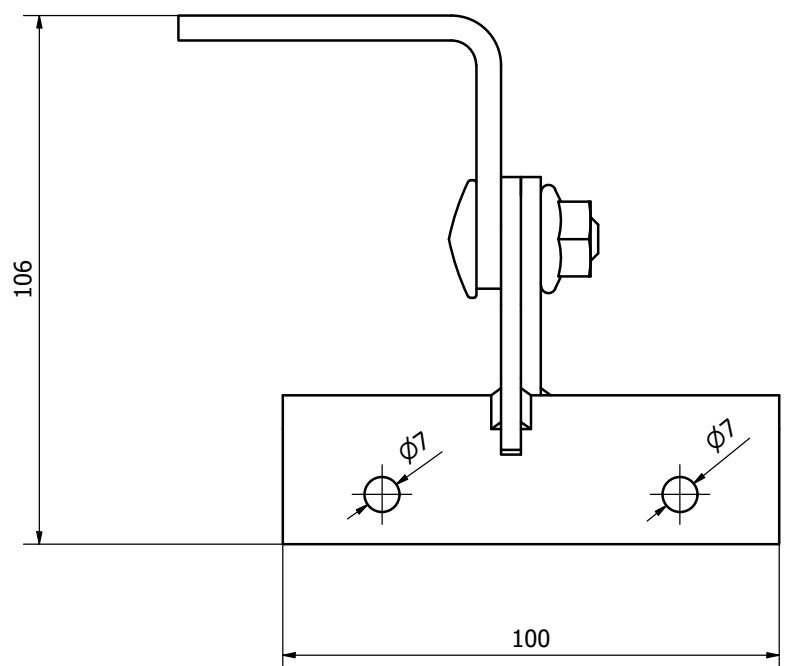


Fig.2

The minimum thickness of the sheet on which the installation of this structure is allowed is 0.4 mm.