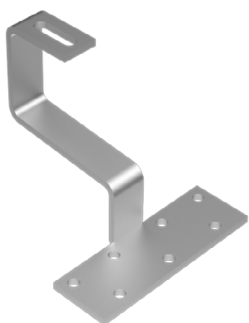


## CHARACTERISTIC

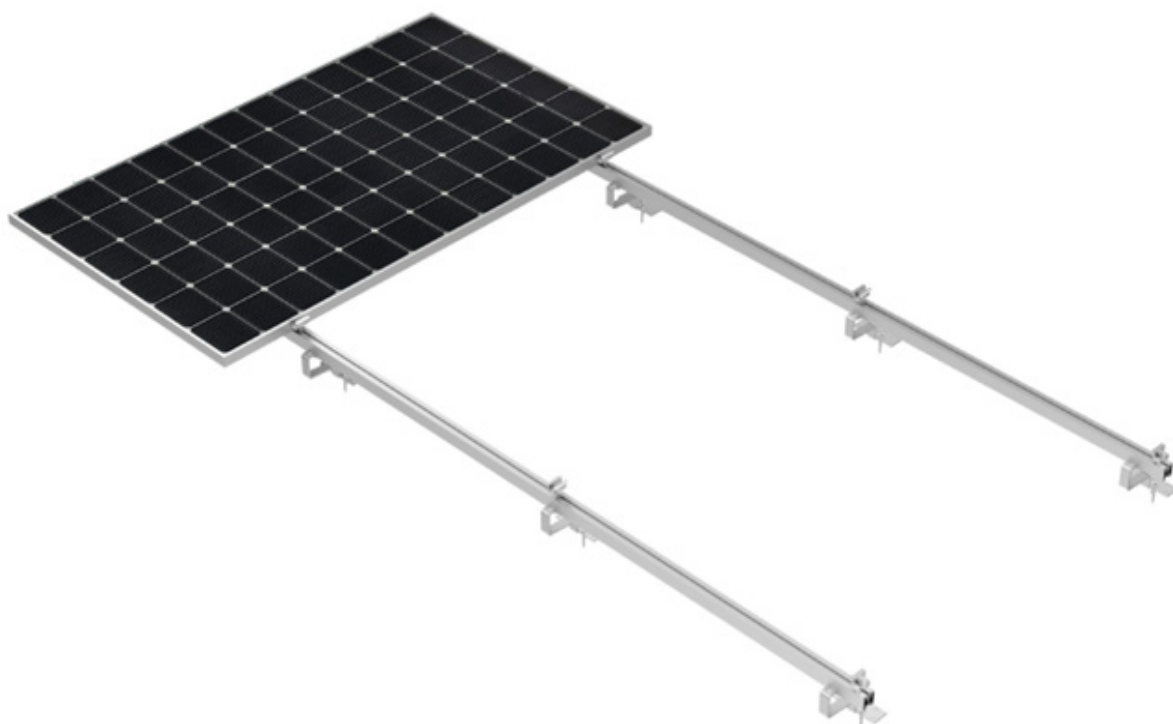
Keno sp.z o.o. is pleased to present you a solution for use on all tiled roofs.



- EASY AND QUICK INSTALLATION
- COMPATIBILITY WITH MOST ROOF
- NO ADJUSTMENT



[SEE  
CATALOG](#)



### DESCRIPTION OF THE CONSTRUCTION ON A SLOPING ROOF, COVERED WITH A TILE

The hook was made with the greatest care and quality. Keno sp.z o.o. provides a 10-year warranty for the above structure due to the fact that the element is made of stainless steel. We have increased its service life by subjecting it to shot-blasting treatment. This process allows not only to extend the resistance of the hook to weather conditions, but also to remove all burrs, so that the element is safe for our customers. The handle is installed by fixing it to the roof rafters using at least two K16 screws with a specially designed wood thread. The hook is compatible with all mounting profiles available in the Keno sp.z o.o. offer. The hook is mounted with the profile using a „T” type screw, which enables the hook to be mounted at any point in the profile.

### TECHNICAL DRAWING

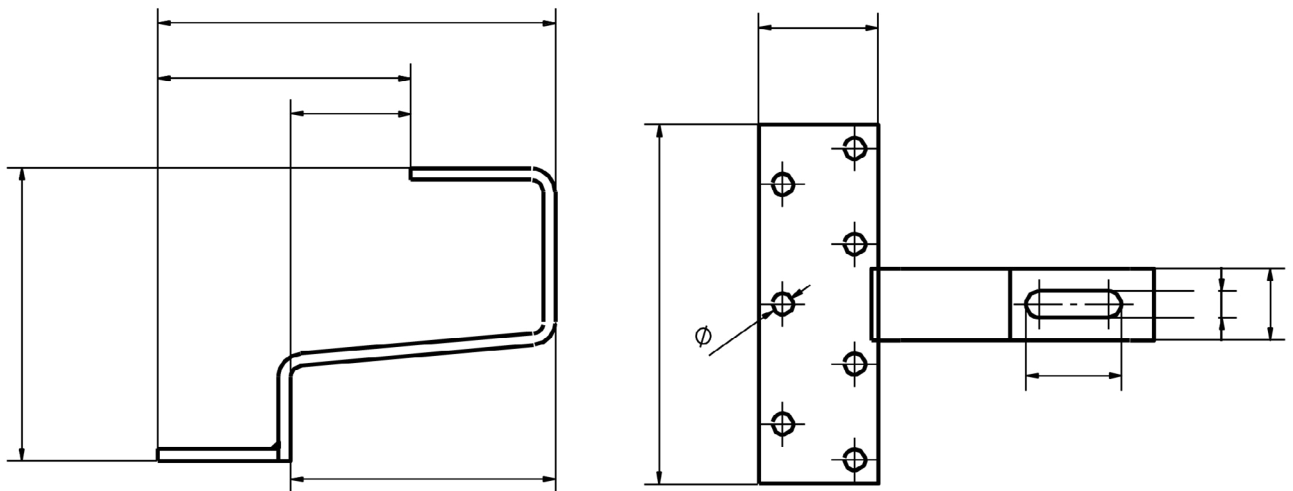


Fig. 1 Dimensions of the K-10 element