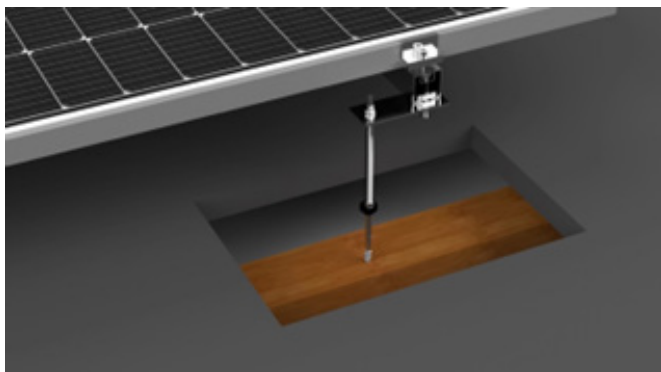


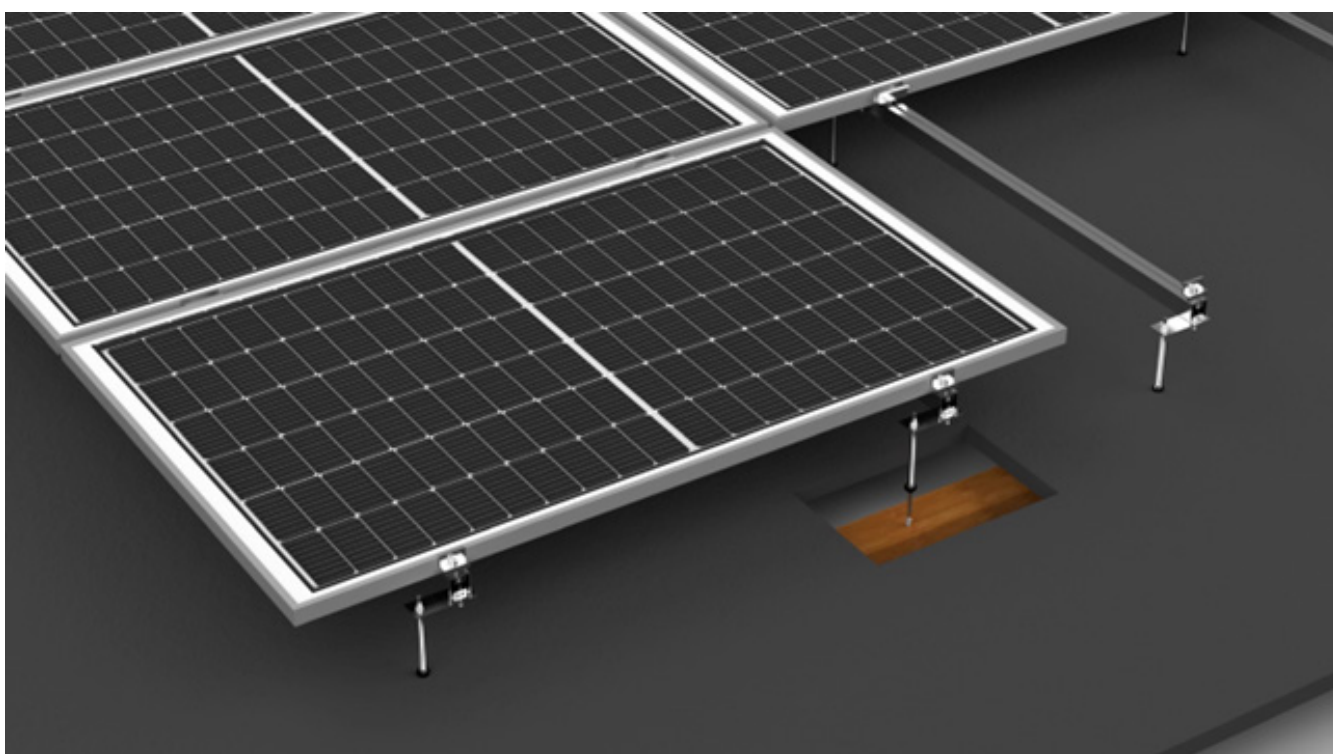
CHARACTERISTIC

Keno sp.z o.o. is pleased to present you a solution for use on all roofs with a wooden structure. It is a structure that allows the modules to be aligned with the roof, so that the modules will fit parallel to the roof sheathing..



- INSTALLATION DURABILITY
- SEALING OF THE OPENING
- POSSIBILITY OF SELECTING THE APPROPRIATE LENGTH OF THE THREADS
- INSTALLATION TO THE ROOF CONSTRUCTION

[SEE
CATALOG](#)



DESCRIPTION OF THE CONSTRUCTION ON PAPER COVERED ROOF WITH HAND-THREADED SCREWS

Keno sp.z o.o. provides a 10-year warranty on the above structure. The structure is assembled by screwing the K-17 double-threaded bolt into the wooden rafters. This element is available in three lengths. We also have a solution for the steel roof structure using K-43 double-threaded bolts, they are available in two lengths (see table below). The profiles are mounted using an adapter (K-03), which enables compatibility with all profiles available in the offer of Keno sp.z o.o.



Figure 1. K17 screw for wooden structures

K-17 (HEXAGONAL SCREW)		
Min. Rafter dimensions: 80x50mm		
Roof dimensions + building height		
200mm	250mm	300mm

DESCRIPTION OF THE CONSTRUCTION ON A PAPER COVERED ROOF, USING AN „L” TYPE MOUNTING BRACKET

The structure is assembled by screwing the K-08 grip to the roof with two K-16 screws. In the absence of full decking, screw into the rafter. The hook is compatible with all mounting profiles available from Keno sp.z o.o. The mounting of the handle with the profile is carried out using a „T-e” type screw, which allows it to be fixed at any point of the profile. Mounting to the roof decking is possible when its thickness is at least 60mm.

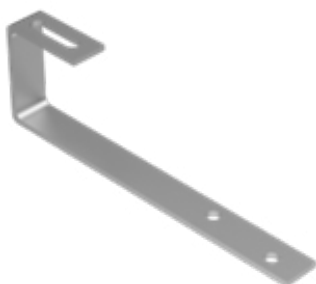


Figure 1 K-08 „L” type mounting bracket

CONSTRUCTION FOR A PAPER ROOF

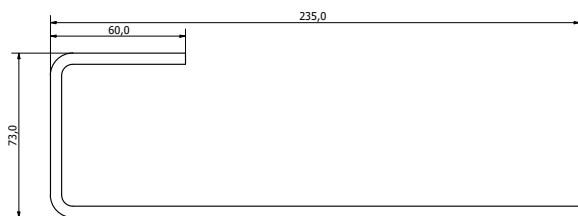


Figure 3. Side view

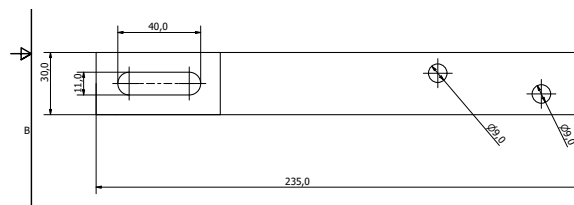


Figure 4. Top view

The K-08 handle also has its second variant, which is the K-08-R, which, thanks to its adjustment, allows the structure to be adjusted to the shape of the roof.



Figure 5. K-08-R „L” type mounting bracket

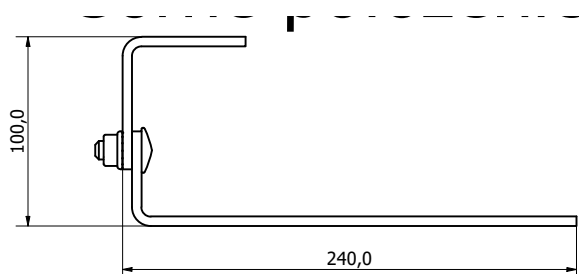


Figure 5. Top Location

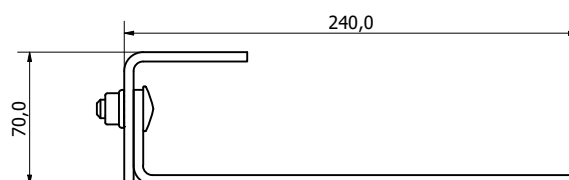


Figure 6, Lower Position