



# 400W+

*Small in Size, Big on Power*

✓ Vertex S



## Requirements of Residential and Commercial Photovoltaic Systems

# Vertex S

Max. Power

## 405W

- Size : 1754\*1096\*30mm
- Weight : 21kg
- Temp coeff. : -0.34%/K
- 1st year degradation : 2%
- Annual degradation : 0.55%
- Product Workmanship Warranty :  
15 years
- Power Warranty : 25 years

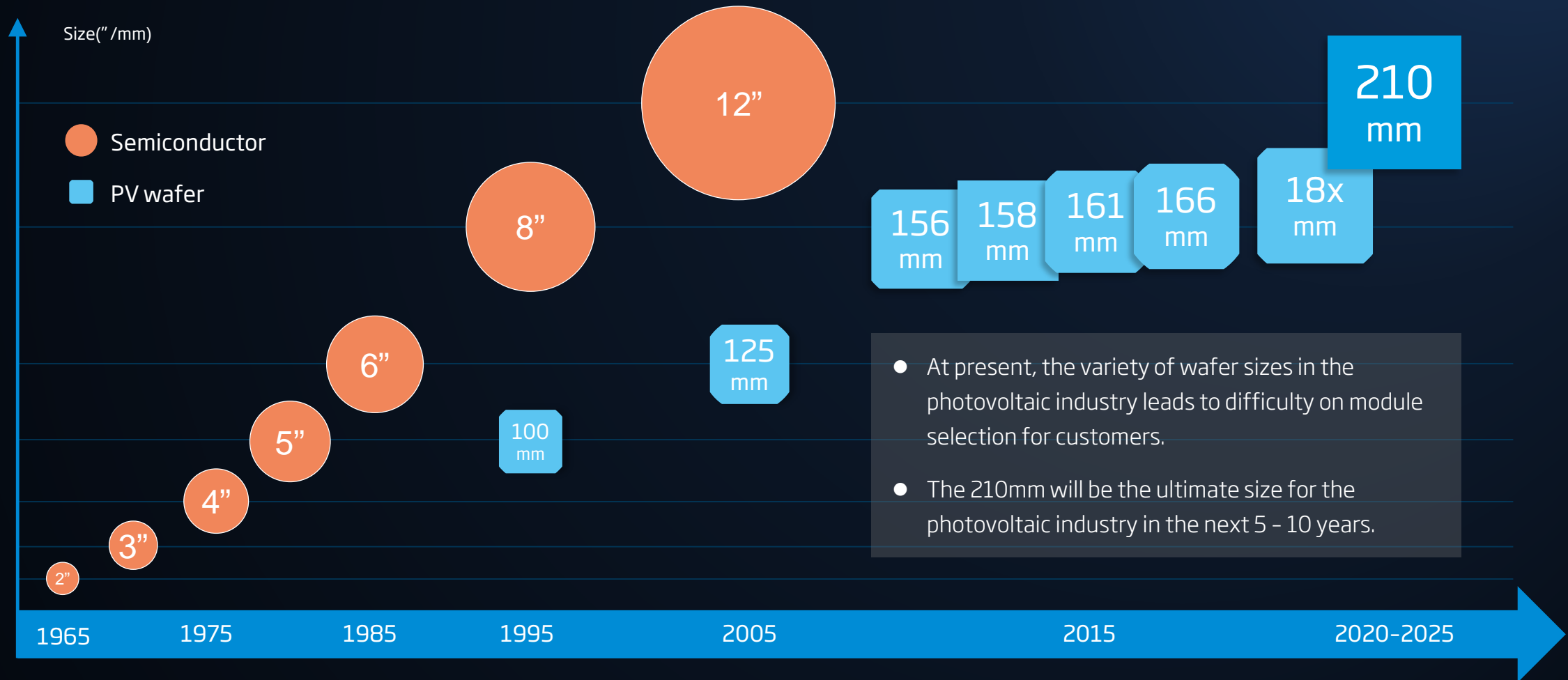
Max. Eff.

## 21.1%+

- 210mm cells
- Multi-busbar
- Non-destructive cutting
- High-density interconnection
- 5\*8 layout
- 1/3-cut cells



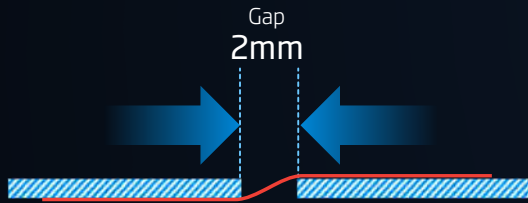
# Evolution of PV Wafer Sizes



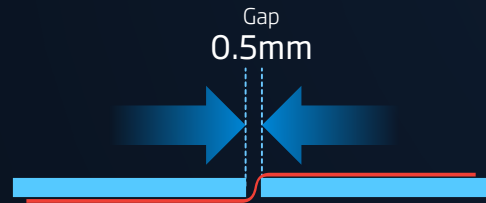
## Optimal Design

with high efficiency and high quality

### Traditional module



### High-density module

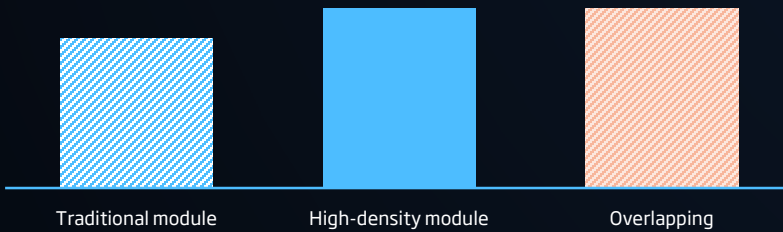


### Overlapping

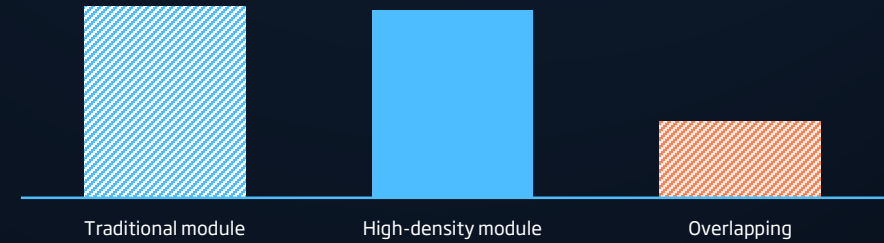


# Balance

### Module Efficiency



### Module Yield



# Small in Size, Big on Power

Small Form Factor, High Power



## 1.75m module size

Up to **60W** higher power!

1754mm  
1664mm



1690x996mm



158  
60

1763x1040mm



166  
60

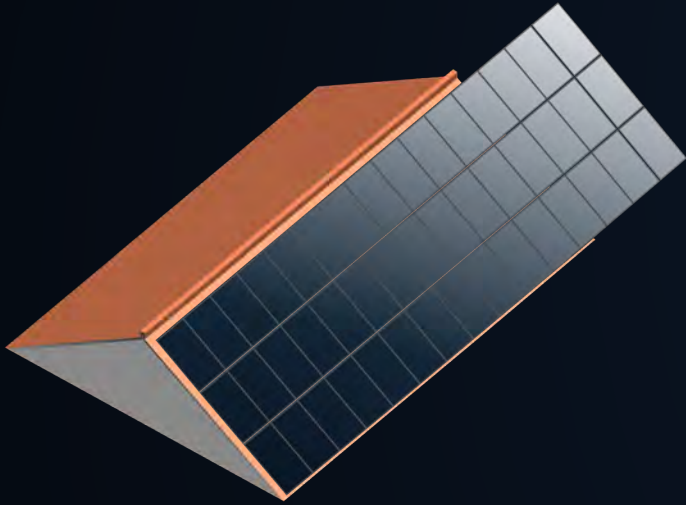
1754x1096mm



210  
40

# Small in Size, Big on Power

## More Capacity on Same Roof Size



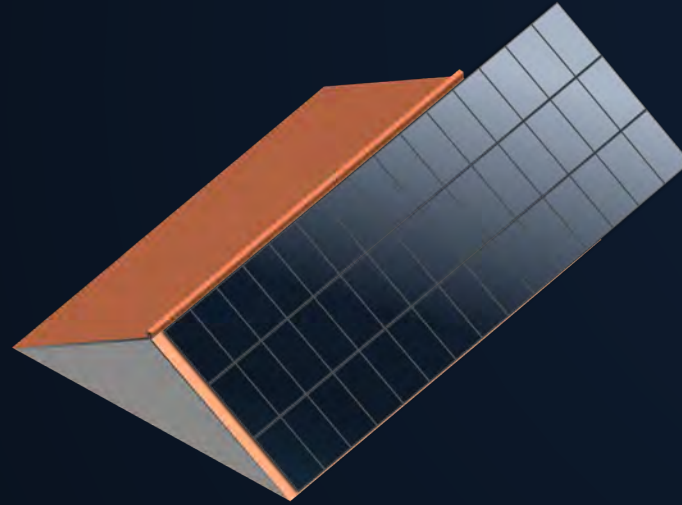
**158** (60)

340W

48pcs (3\*16)

16.32 kW

**256.3 MW·h**



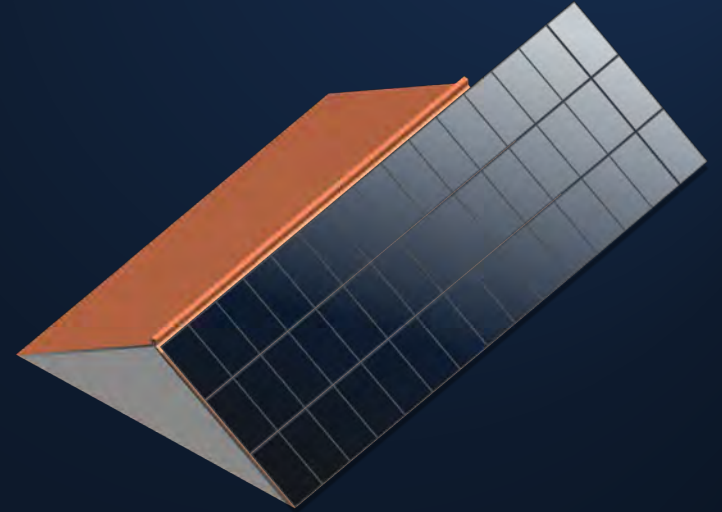
**166** (60)

370W

45pcs (3\*15)

16.65 kW

**289.3 MW·h**



**Vertex S**

405W

45pcs (3\*15)

**18.23 kW**



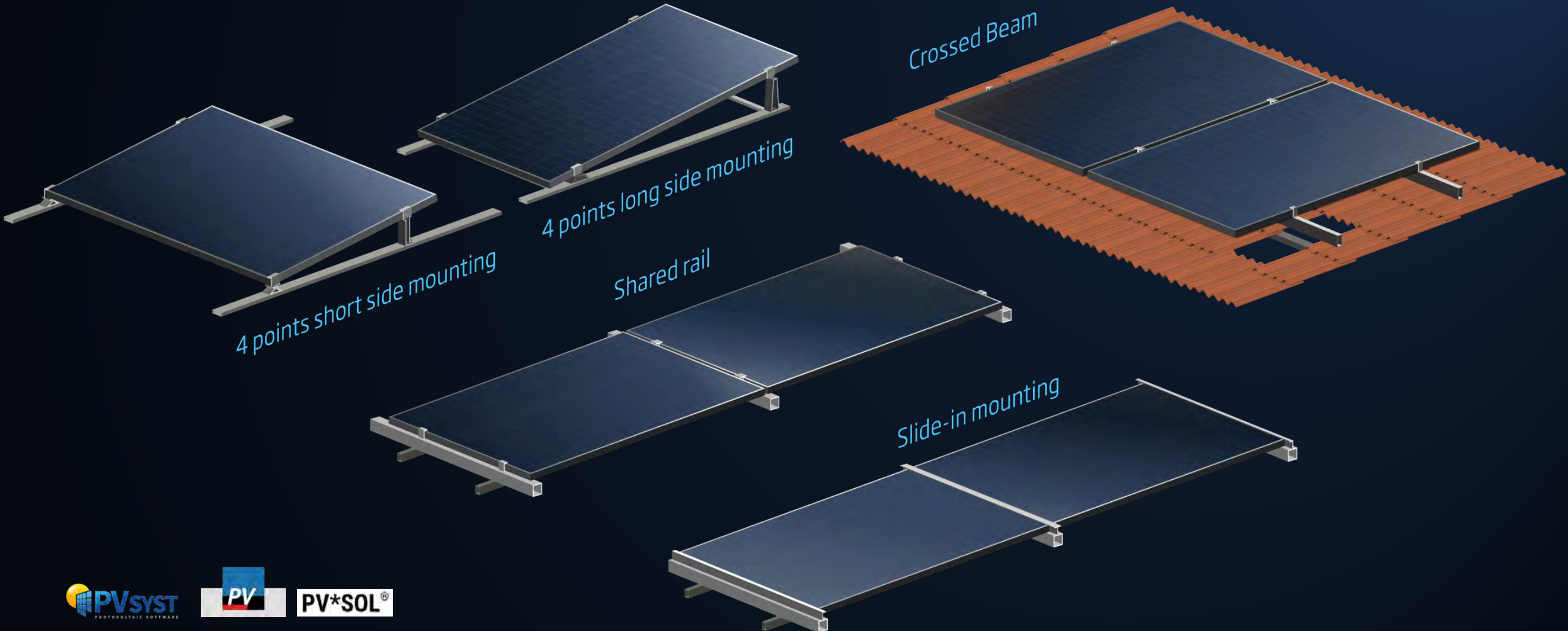
**316.7 MW·h**

Vertex S generates **23%** more power than 158 60 mono and **10%** more than 166 60 mono in 25 years.

*Sample calculation based on Jinan, ShanDong Province, China*

# Universal Solution for Residential and C&I Roofs

Diverse Installation Solutions. Flexible for System Deployment



System Planning Tools ready for Vertex S



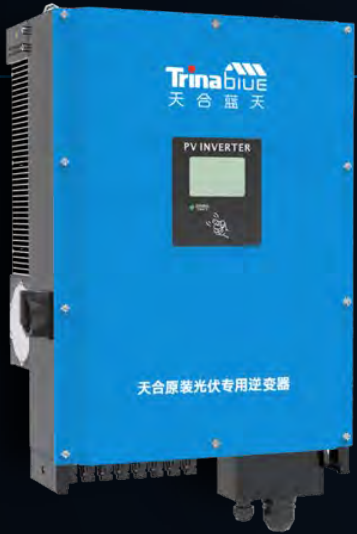
# Universal Solution for Residential and C&I Rooftops

Excellent Inverter & Optimizer Compatibility

TrinaSolar

$I_{SC}$ : 12.34A       $V_{OC}$ : 41.4V

166 60 370W  $I_{SC}$ : 11.3A  $V_{OC}$ : 41.3V



solar**edge**

HUAWEI

阳光电源  
SUNGROW

固德威  
GOODWE

SOLAX  
POWER

SMA

Trina**BLUE**  
天合蓝天



# Durability and Reliability

**2%**


1st year max. degradation

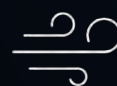
**0.55%**

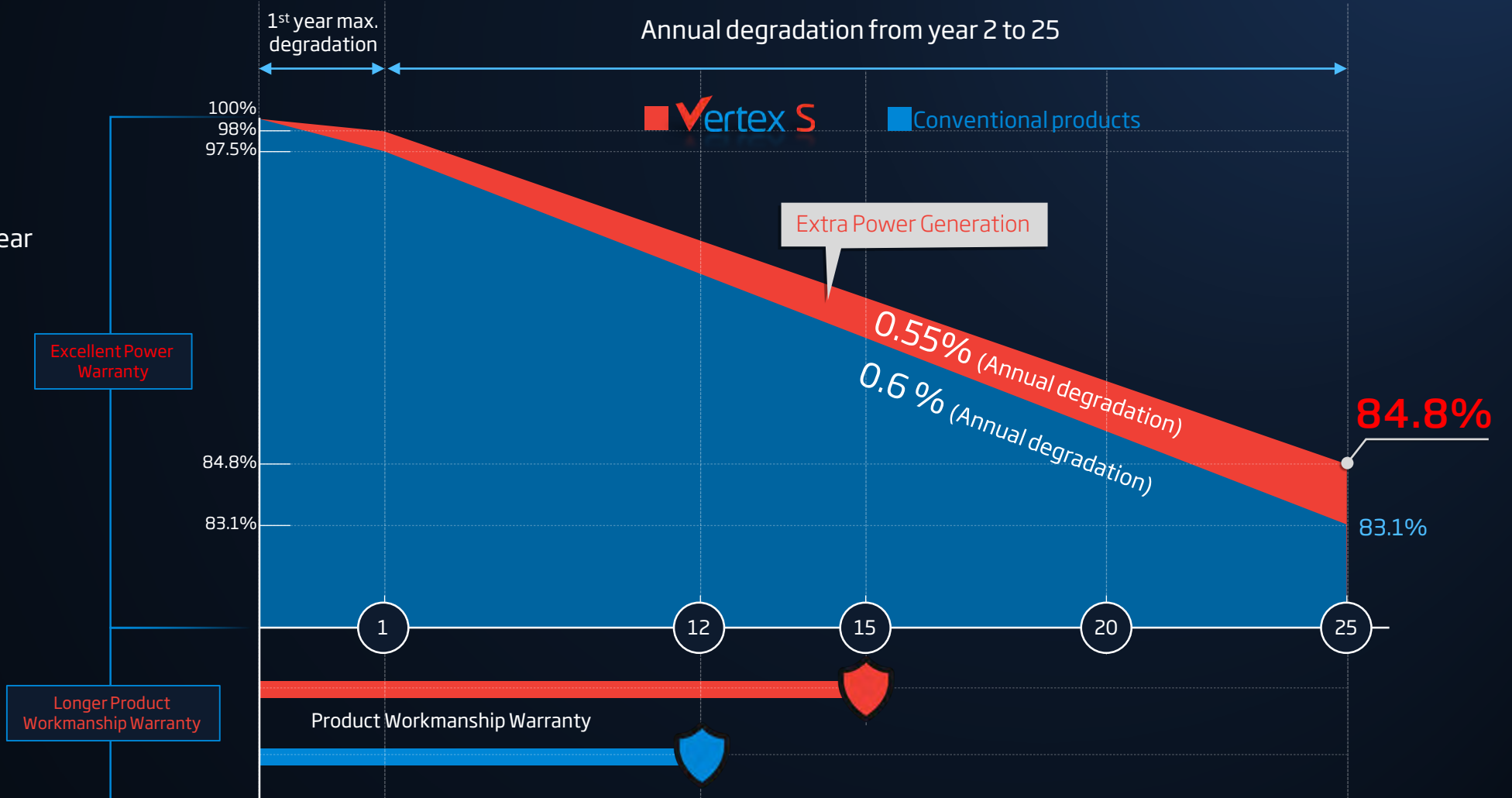
Annual degradation from year 2 to 25

**15Y**

Product Workmanship Warranty

 Snow load  
Max **6,000Pa**

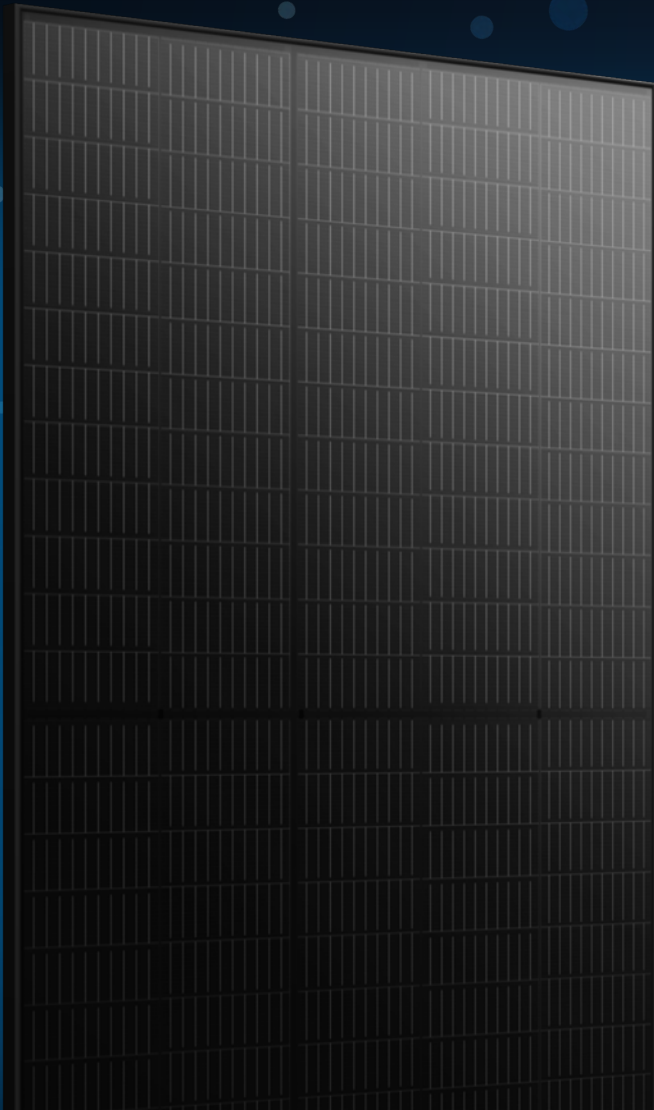
 Wind load  
Max **4,000Pa**



# Aesthetic Black Product

Designed for High-end Residential Rooftop

Trina solar



## Outstanding Visual Appearance

- Designed with aesthetics in mind
- Excellent cell color control by dedicated cell blackening treatment and machine selection
- Thinner wires that appear all black at a distance

Vertex S

# Capacity Plan of Vertex S

Mass Production  
Start in Jan, 2021



# Vertex Platform - Vertex Family



2020 July

2020 Sep

2021 Jan

2021 Q2

# Designed for Rooftop Photovoltaic Systems

Trina solar



Max. Power

405W

Max. Eff.

21.1%+

Small in Size - Big on power

+

Universal Solution for Residential and C&I Rooftops

+

High Reliability

+

Outstanding Visual Appearance

# Roadmap PV Modules | Residential and C&I Rooftop

	Product Line	2020		2021			
		Q3	Q4	Q1	Q2	Q3	Q4
PERC MONO	PERC mono, black frame, black/white back sheet <b>HoneyBlack<sup>M</sup></b> TSM-DD06M.05(II) <b>Vertex S</b> TSM-DE09.05	320-335W <i>(120 half-cut cells, 158.75mm wafers, MBB + square Mono cells)</i> Datasheet Version 2020_B		Up to 395w <i>(120 square third-cut Mono cells, 210mm wafers, MBB)</i>			
		330-345 W <i>(120 half-cut cells, 158.75mm wafers, MBB + square Mono cells)</i> Datasheet Version 2020_B		Up to 405w <i>(120 square third-cut Mono cells, 210mm wafers, MBB)</i>			
	PERC mono, black frame, white back sheet <b>Honey<sup>M</sup></b> TSM-DE06M.08(II) <b>Honey<sup>M</sup></b> TSM-DE08M.08(II) <b>Vertex S</b> TSM-DE09.08	365-380 W <i>(120 half-cut cells, 166mm wafers, MBB + round Mono cells)</i> Datasheet Version 2020_A		Up to 405w <i>(120 square third-cut Mono cells, 210mm wafers, MBB)</i>			

*Note: Timeline above indicates manufacturing time. Arrival time to customers can vary depending on shipment lead time and availability.*

Thanks for watching!

Vertex S

