

Zertifikat

Certificate



Zertifikat Nr. *Certificate No.*
R 50240405

Blatt *Page*
0009

Ihr Zeichen *Client Reference*
V.W.

Unser Zeichen *Our Reference*
01-ZYI- 15055561 017

Ausstellungsdatum
29.12.2016

Date of Issue
(day/mo/yr)

Genehmigungsinhaber *License Holder*
Wenzhou Longhua Daily
Electron Co., Ltd.
No. 3 Building, Part C
Xixi Industry Zone, Hongqiao
Yueqing, Zhejiang 325608
P.R. China

Fertigungsstätte *Manufacturing Plant*
Wenzhou Longhua Daily
Electron Co., Ltd.
No. 3 Building, Part C
Xixi Industry Zone, Hongqiao
Yueqing, Zhejiang 325608
P.R. China

Prüfzeichen *Test Mark*



Bauart geprüft
Sicherheit
Regelmäßige
Produktions-
überwachung

www.tuv.com
ID 2000000000

Geprüft nach *Tested acc. to*
EN 62275:2015

Zertifiziertes Produkt (Geräteidentifikation)
Certified Product (Product Identification)

Lizenzentgelte - Einheit
License Fee - Unit

Kabelbinder (Cable Tie)

as page 0001

Addition

Type Designation	:1) LH-M-260-10	LH-M-380-15
	2) LH-S-610-24	LH-S-740-29
	LH-S-920-36	
	3) LH-HD-220-8	LH-HD-610-24
	LH-HD-750-30	
	4) LH-EHD-710-28	LH-EHD-750-29
	LH-EHD-1020-40	LH-EHD-1168-48
	LH-EHD-1530-60	
	5) LH-HSD-230-9	LH-HSD-290-11
	LH-HSD-380-15	LH-HSD-480-19
	LH-HSD-580-22	LH-HSD-730-28
	LH-HSD-880-34	

Continued on page 0010

ANLAGE (Appendix): 1.2

Dem Zertifikat liegt unsere Prüf- und Zertifizierungsordnung zugrunde und es bestätigt die Konformität des Produktes mit den oben genannten Standards und Prüfgrundlagen. Zusätzliche Anforderungen in Ländern, in denen das Produkt in Verkehr gebracht werden soll, müssen zusätzlich betrachtet werden. Die Herstellung des zertifizierten Produktes wird überwacht.

This certificate is based on our Testing and Certification Regulation and states the conformity of the product with the standards and testing requirements as indicated above. Any additional requirements in countries where the product is going to be marketed have to be considered additionally. The manufacturing of the certified product is subject to surveillance.

TÜV Rheinland LGA Products GmbH - Tillystraße 2 - 90431 Nürnberg
Tel.: (+49/221)8 06 - 13 71 e-mail: cert-validity@de.tuv.com
Fax: (+49/221)8 06 - 39 35 http://www.tuv.com/safety

Zertifizierungsstelle



Dipl.-Ing. (FH) F. He

Zertifikat

Certificate



Zertifikat Nr. *Certificate No.*
R 50240405

Blatt *Page*
0010

Ihr Zeichen *Client Reference*
V.W.

Unser Zeichen *Our Reference*
01-ZYI- 15055561 017

Ausstellungsdatum
29.12.2016

Date of Issue
(day/mo/yr)

Genehmigungsinhaber *License Holder*
Wenzhou Longhua Daily
Electron Co., Ltd.
No. 3 Building, Part C
Xixi Industry Zone, Hongqiao
Yueqing, Zhejiang 325608
P.R. China

Fertigungsstätte *Manufacturing Plant*
Wenzhou Longhua Daily
Electron Co., Ltd.
No. 3 Building, Part C
Xixi Industry Zone, Hongqiao
Yueqing, Zhejiang 325608
P.R. China

Prüfzeichen *Test Mark*

Geprüft nach *Tested acc. to*
EN 62275:2015



Zertifiziertes Produkt (Geräteidentifikation)
Certified Product (Product Identification)

Lizenzentgelte - Einheit
License Fee - Unit

Kabelbinder (Cable Tie)

Continuation from page 0009

Loop Tensile Strength : 1) 80N
2) 230N
3) 540N
4) 800N
5) 1200N

Operating Temperature for Application : -40°C to 85°C
Minimum Temperature During Installation : -20°C

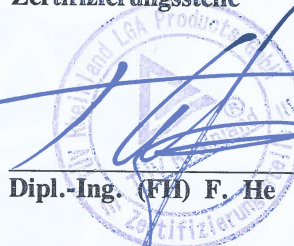
ANLAGE (Appendix): 1.2

Dem Zertifikat liegt unsere Prüf- und Zertifizierungsordnung zugrunde und es bestätigt die Konformität des Produktes mit den oben genannten Standards und Prüfgrundlagen. Zusätzliche Anforderungen in Ländern, in denen das Produkt in Verkehr gebracht werden soll, müssen zusätzlich betrachtet werden. Die Herstellung des zertifizierten Produktes wird überwacht.

This certificate is based on our Testing and Certification Regulation and states the conformity of the product with the standards and testing requirements as indicated above. Any additional requirements in countries where the product is going to be marketed have to be considered additionally. The manufacturing of the certified product is subject to surveillance.

TÜV Rheinland LGA Products GmbH - Tillystraße 2 - 90431 Nürnberg
Tel.: (+49/221)8 06 - 13 71 e-mail: cert-validity@de.tuv.com
Fax: (+49/221)8 06 - 39 35 http://www.tuv.com/safety

Zertifizierungsstelle



Dipl.-Ing. (FH) F. He

Wenzhou Longhua Daily Electron Co.,
Ltd.
Vane Wang
Sales Dept.
No. 3 Building, Part C
Xixi Industry Zone, Hongqiao
Yueqing, Zhejiang 325608
P.R. China

Date : 29.12.2016
Our ref. : ZYI 01
Your ref.: V.W.

Ref : R TÜV-Mark Approval

Type of Equipment : Cable Tie
Model Designation : See Certificate
Certificate No. : R 50240405 0009
Report No. : 15055561 017

Dear Vane Wang,

A specimen of above mentioned product has been tested and found to be technically in compliance with § 20 and § 21 of the ProdSG (= Product Safety Act).

The certificate is issued with the reservation that the licence holder applies all information required in § 6 of the ProdSG related to name and address of the manufacturer or his authorized representative / importer including their respective addresses on the product prior to marketing the product in the European Economic Area. Enclosed please find the certificate of approval No. R 50240405 0009.

If cancellation of the certificate is submitted by November 15 in a given year, no fee will be charged for the following year.

Please contact our office for approval of your new products.

With kind regards,

Certification Body


Dipl.-Ing. (FH) F. He

CC: Wenzhou Longhua Daily

Enclosure

证书的详细资料请登陆www.certipedia.com查阅,或拨打我司客服热线800 999 3668 / 400 883 1300咨询

C E R T I F I C A T E



of Conformity Low Voltage Directive 2014/35/EU

Registration No.: AN 50366702 0001

Report No.: 15055561 017

Holder: Wenzhou Longhua Daily
Electron Co., Ltd.
No. 3 Building, Part C
Xixi Industry Zone, Hongqiao
Yueqing, Zhejiang 325608
P.R. China

Product: Cable Tie
(Cable Tie)

Identification: Type Designation : LH-M-100-4S LH-S-200-8S
LH-S-300-12S LH-HD-200-8S
(Trade Mark of Wenzhou Longhua Daily Electron Co., Ltd.)
Serial No. : Engineering Samples
Remark: Issued in conjunction with TÜV Rheinland
license R 50240405 0001-0010.
See more type designations in attachment 1.1&1.2

This certificate of conformity is based on an evaluation of a sample of the above mentioned product. Technical Report and documentation are at the Licence Holder's disposal. This is to certify that the tested sample is in conformity with Annex I of Council Directive 2014/35/EU, referred to as the Low Voltage Directive. This certificate does not imply assessment of the series-production of the product and does not permit the use of a TÜV Rheinland mark of conformity. The holder of the certificate is authorized to use this certificate in connection with the EC declaration of conformity according to Annex IV of the Directive.

Certification Body

Date 29.12.2016

A blue ink signature is written over a circular stamp. The stamp contains the text 'TÜV Rheinland LGA Products GmbH' and 'NÜRNBERG'. Below the signature, the text 'Dipl.-Ing. (FH) F. He' is printed.

Dipl.-Ing. (FH) F. He

TÜV Rheinland LGA Products GmbH - Tillystraße 2 - 90431 Nürnberg

CE The CE marking may be used if all relevant and effective EC Directives are complied with. CE

TÜV Rheinland
LGA Products GmbH
Tillystraße 2, 90431 Nürnberg

Attachment to
Registration No.: AN 50366702 0001
Report No.: 15055561 017

Manufacturer: Wenzhou Longhua Daily
Electron Co., Ltd.
No. 3 Building, Part C
Xixi Industry Zone, Hongqiao
Yueqing, Zhejiang 325608
P.R. China

Scope: Type Designation : LH-HD-300-12S LH-M-080-3
LH-M-100-4 LH-M-120-5
LH-M-130-5 LH-M-150-6
LH-M-160-6 LH-M-200-8
LH-I-140-5 LH-I-150-6
LH-I-200-8 LH-I-250-10
LH-I-280-11 LH-I-300-12
LH-I-370-15 LH-S-120-5
LH-S-160-6 LH-S-180-7
LH-S-200-8 LH-S-250-10
LH-S-280-11 LH-S-300-12
LH-S-310-12 LH-S-350-1
LH-S-360-14 LH-S-370-15
LH-S-380-15 LH-S-390-16
LH-S-430-17 LH-S-450-18
LH-S-500-20 LH-S-550-21
LH-HD-150-6 LH-HD-200-8
LH-HD-250-10 LH-HD-300-12
LH-HD-350-14 LH-HD-365-14

Cologne, 29.12.2016


Dipl.-Ing. (FH) F. He



TÜV Rheinland
LGA Products GmbH
Tillystraße 2, 90431 Nürnberg

Attachment to
Registration No.: AN 50366702 0001
Report No.: 15055561 017

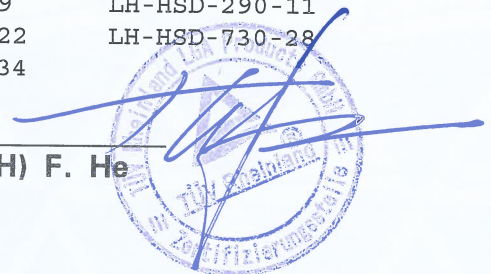
Manufacturer: Wenzhou Longhua Daily
Electron Co., Ltd.
No. 3 Building, Part C
Xixi Industry Zone, Hongqiao
Yueqing, Zhejiang 325608
P.R. China

Scope:

Type Designation	:	LH-HD-380-15	LH-HD-400-16
		LH-HD-450-18	LH-HD-540-21
		LH-HD-550-22	LH-EHD-400-16
		LH-EHD-450-18	LH-EHD-500-20
		LH-EHD-550-21	LH-EHD-560-22
		LH-EHD-610-24	LH-EHD-760-30
		LH-EHD-780-31	LH-EHD-810-32
		LH-EHD-920-36	LH-EHD-1220-48
		LH-HSD-530-21	LH-HSD-650-26
		LH-HSD-1000-34	LH-M-260-10
		LH-M-380-15	LH-S-610-24
		LH-S-740-29	LH-S-920-36
		LH-HD-220-8	LH-HD-610-24
		LH-HD-750-30	LH-EHD-710-28
		LH-EHD-750-29	LH-EHD-1020-40
		LH-EHD-1168-48	LH-EHD-1530-60
		LH-HSD-380-15	LH-HSD-480-19
		LH-HSD-230-9	LH-HSD-290-11
		LH-HSD-580-22	LH-HSD-730-28
		LH-HSD-880-34	

Cologne, 29.12.2016

Dipl.-Ing. (FH) F. He



Wenzhou Longhua Daily Electron Co.,
Ltd.
Vane Wang
Sales Dept.
No. 3 Building, Part C
Xixi Industry Zone, Hongqiao
Yueqing, Zhejiang 325608
P.R. China

Date : 29.12.2016
Our ref. : ZYI 01
Your ref.: V.W.

Ref : AN Certificate of Conf. Low Voltage D.

Type of Equipment : Cable Tie
Model Designation : See Certificate
Certificate No. : AN 50366702 0001
Report No. : 15055561 017

Dear Vane Wang,

We herewith confirm that a sample of the above mentioned technical equipment has been tested and was found to be in accordance with the relevant requirements.

Enclosed please find your Certificate of Conformity.

We appreciate your kind support and would like to offer our assistance and continuous services in the future.

With kind regards,

Certification Body


Dipl.-Ing. (FH) F. He

CC: Wenzhou Longhua Daily

Enclosure

证书的详细资料请登陆www.certipedia.com查阅,或拨打我司客服热线800 999 3668 / 400 883 1300咨询

Certificate No. R50240405 0009-0010 Our Reference 01-ZYI-15055561 017 Appendix No. 1.2

Constructional Data Form (CDF) for cable ties

License holder : Wenzhou Longhua Daily Electron Co., Ltd.
 No. 3 Building, Part C, Xixi Industry Zone, Hongqiao, Yueqing, Zhejiang 325608, P.R. China

Factory : Wenzhou Longhua Daily Electron Co., Ltd.
 No. 3 Building, Part C, Xixi Industry Zone, Hongqiao, Yueqing, Zhejiang 325608, P.R. China

Type of Appliance : Cable Tie

Type Designation : See Table A

Rating : See Additional Information as below

Protection Class : N/A

Supply connection : power cord
 fixed wiring
 direct plug in
 others: N/A

Please tick above box when applicable

Additional information

Type	: <input checked="" type="checkbox"/> Type 1 <input type="checkbox"/> Type 2
Operating temperature for application	: -40°C to 85 °C
Minimum temperature during installation	: -20 °C
Contribution to fire	: <input type="checkbox"/> Flame propagating <input checked="" type="checkbox"/> Non-flame propagating
Resistance to ultraviolet	: <input checked="" type="checkbox"/> Not declared for white colour <input checked="" type="checkbox"/> Resistant to ultraviolet light for black colour
Resistance to corrosion	: N/A

Table A:

Model	Dimension WxLxT (mm)	Colour	Declared bundle Diameter (mm)	Declared loop tensile Strength (N)
LH-M-260-10	2,5x260x1,1	Black / White	3 to 73	80
LH-M-380-15	2,5x380x1,1	Black / White	3 to 110	80
LH-S-610-24	4,8x610x1,3	Black / White	3,5 to 179,9	230
LH-S-740-29	4,8x740x1,3	Black / White	3,5 to 220	230
LH-S-920-36	4,8x920x1,3	Black / White	3,5 to 278	230
LH-HD-220-8	7,6x220x1,6	Black / White	8,5 to 56	540

TÜV Rheinland Group

Wenzhou Longhua Daily Electron Co., Ltd.

06.12.2016

Yi Zeng



Vane Wang

Date

Name

Signature

Date

Name

Signature

Certificate No. R50240405 0009-0010 Our Reference 01-ZYI-15055561 017 Appendix No. 1.2

Constructional Data Form (CDF) for cable ties

Table A:

LH-HD-610-24	7,6x610x1,6	Black / White	8,5 to 181,5	540
LH-HD-750-30	7,6x750x1,6	Black / White	8,5 to 226	540
LH-EHD-710-28	8,8x710x1,8	Black / White	8,5 to 195	800
LH-EHD-750-29	8,8x750x1,8	Black / White	8,5 to 205	800
LH-EHD-1020-40	8,8x1020x1,8	Black / White	8,5 to 295	800
LH-EHD-1168-48	8,8x1168x1,8	Black / White	8,5 to 340	800
LH-EHD-1530-60	8,8x1530x1,8	Black / White	160 to 450	800
LH-HSD-230-9	12,4x230x2,0	Black / White	9 to 57	1200
LH-HSD-290-11	12,4x290x2,0	Black / White	9 to 76	1200
LH-HSD-380-15	12,4x380x2,0	Black / White	9 to 103,5	1200
LH-HSD-480-19	12,4x480x2,0	Black / White	9 to 136	1200
LH-HSD-580-22	12,4x580x2,0	Black / White	9 to 168	1200
LH-HSD-730-28	12,4x730x2,0	Black / White	9 to 216	1200
LH-HSD-880-34	12,4x880x2,0	Black / White	9 to 263	1200

Critical Components

Material: e.g. external enclosure, PCB, closed-end connector, sleeves, cord anchorage etc

Components with winding: e.g. motor, transformer, magnetic coil etc.

Other components: e.g. switch, thermostat, heater, plug, internal wire, capacitor, relay, varistor etc.

Object/part No.	Manufacturer/ trademark	Type/ model	Technical data	Standard	Mark(s) of conformity
Body	ASCEND PERFORMANCE MATERIALS LLC.	VYDYNE 21SPF	PA66	EN 62275	Tested with appliance

TÜV Rheinland Group

Wenzhou Longhua Daily Electron Co., Ltd.

06.12.2016

Yi Zeng



Vane Wang

Date

Name

Signature

Date

Name

Signature



PHOTO DOCUMENTATION

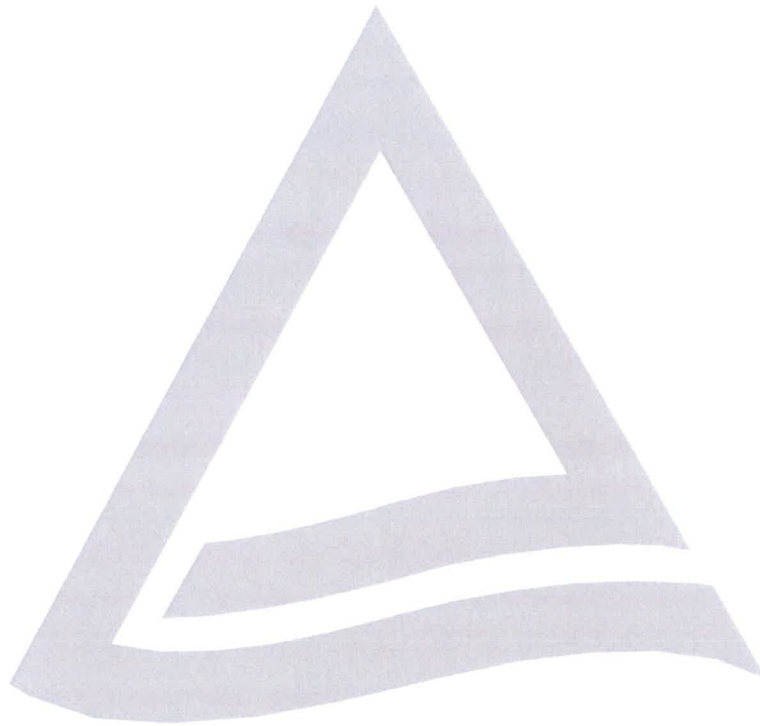
15055561 017

for

Cable Tie

LH-M series; LH-S series; LH-HD series;
LH-EHD series; LH-HSD series

Wenzhou Longhua Daily Electron Co., Ltd.

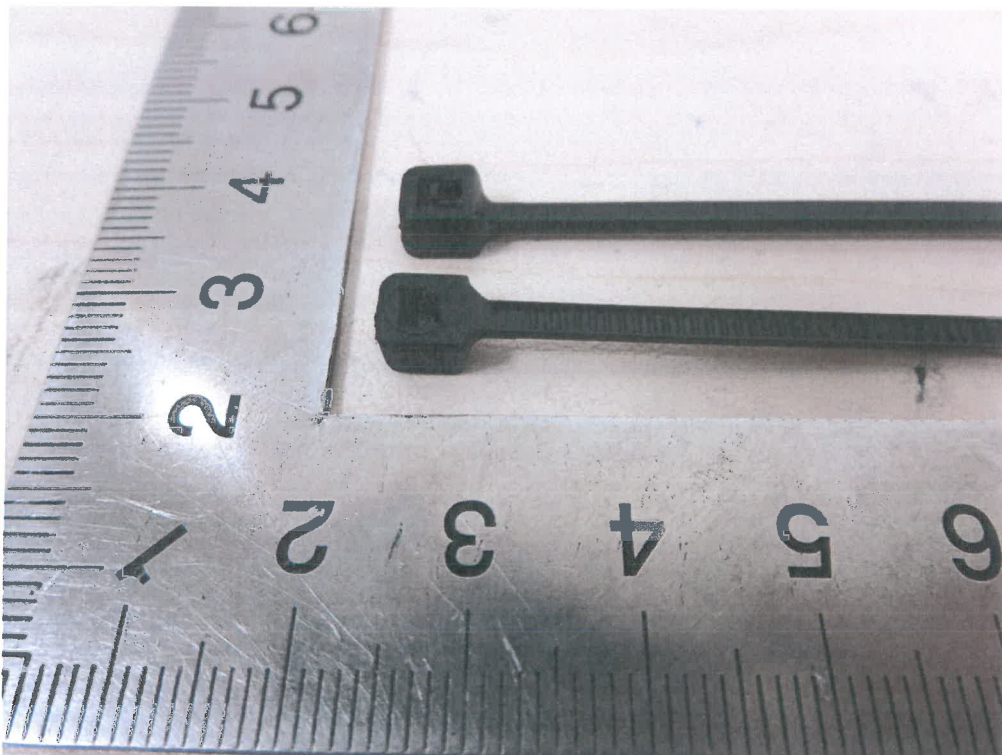
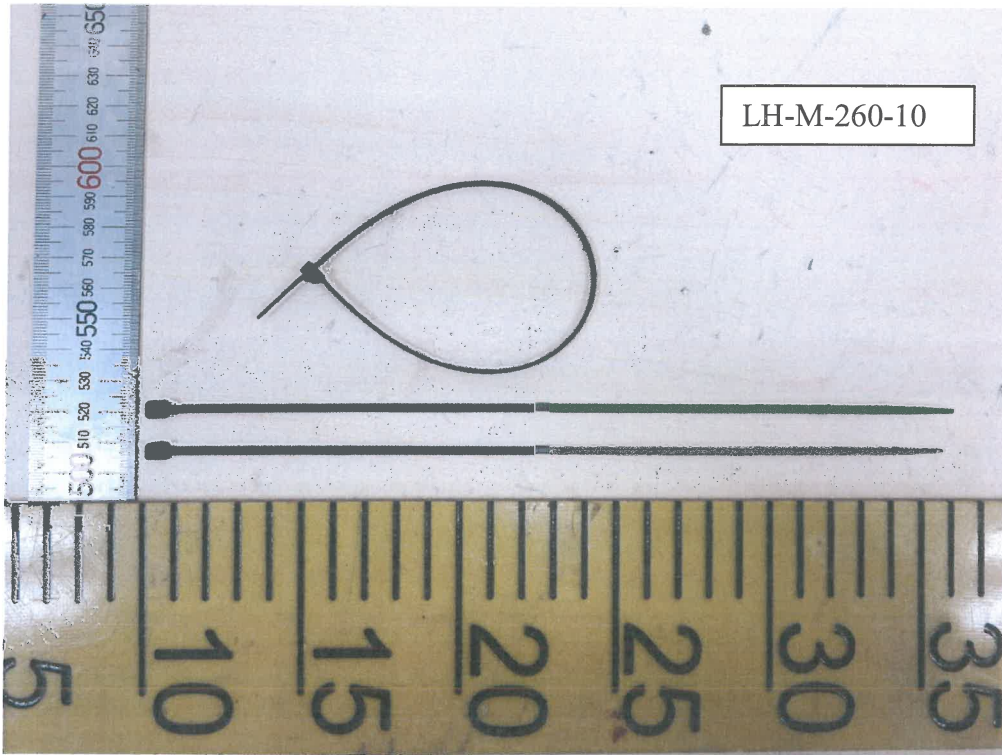


This documentation consists of 5 pages (excluding this cover page)



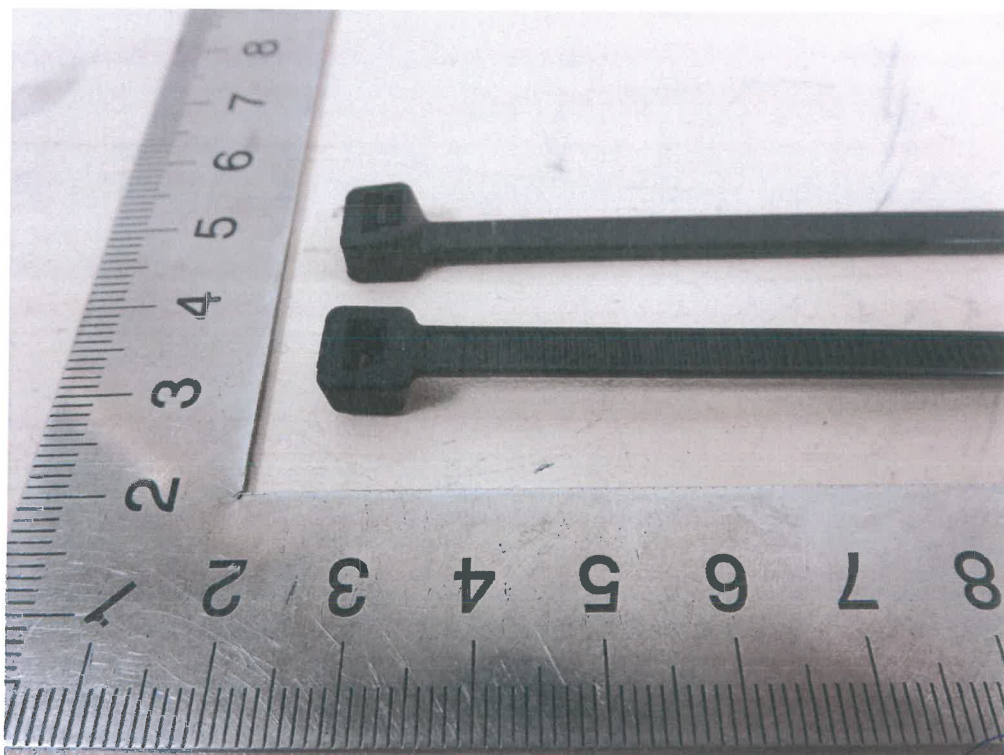
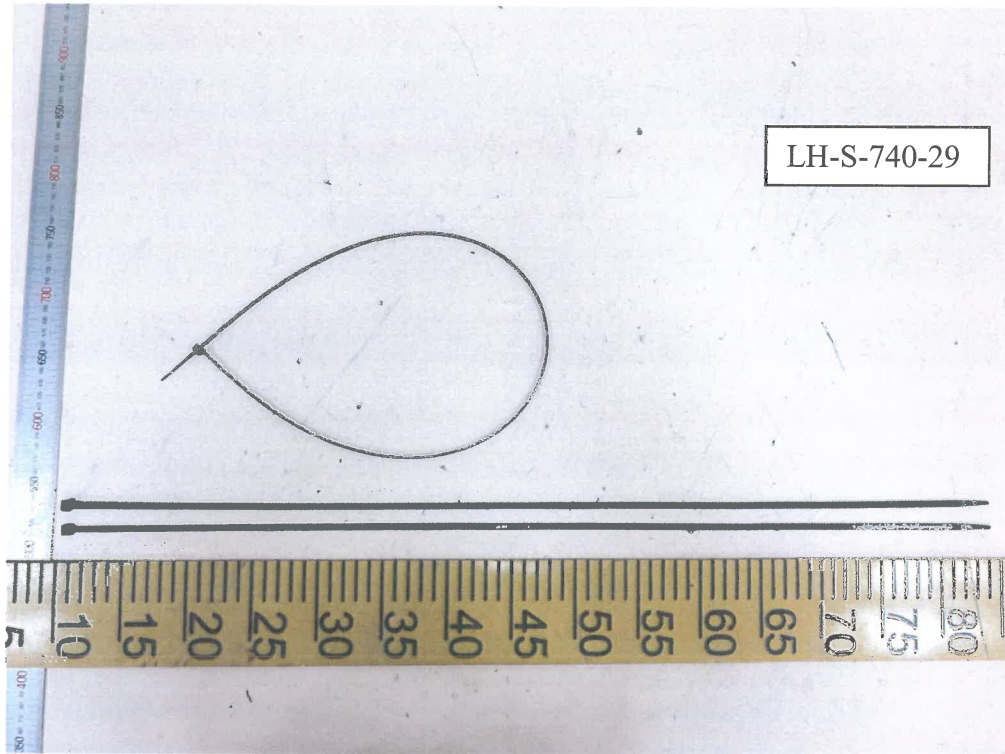
Report Number: 15055561 017

Model: LH-M series; LH-S series; LH-HD series; LH-EHD series; LH-HSD series



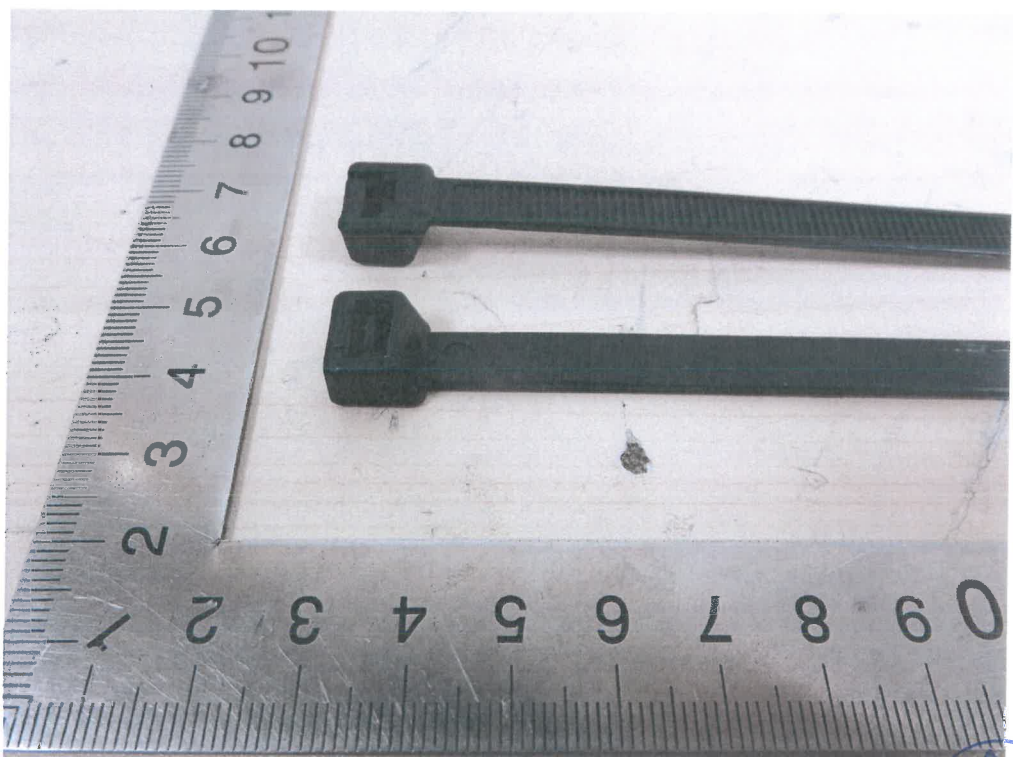
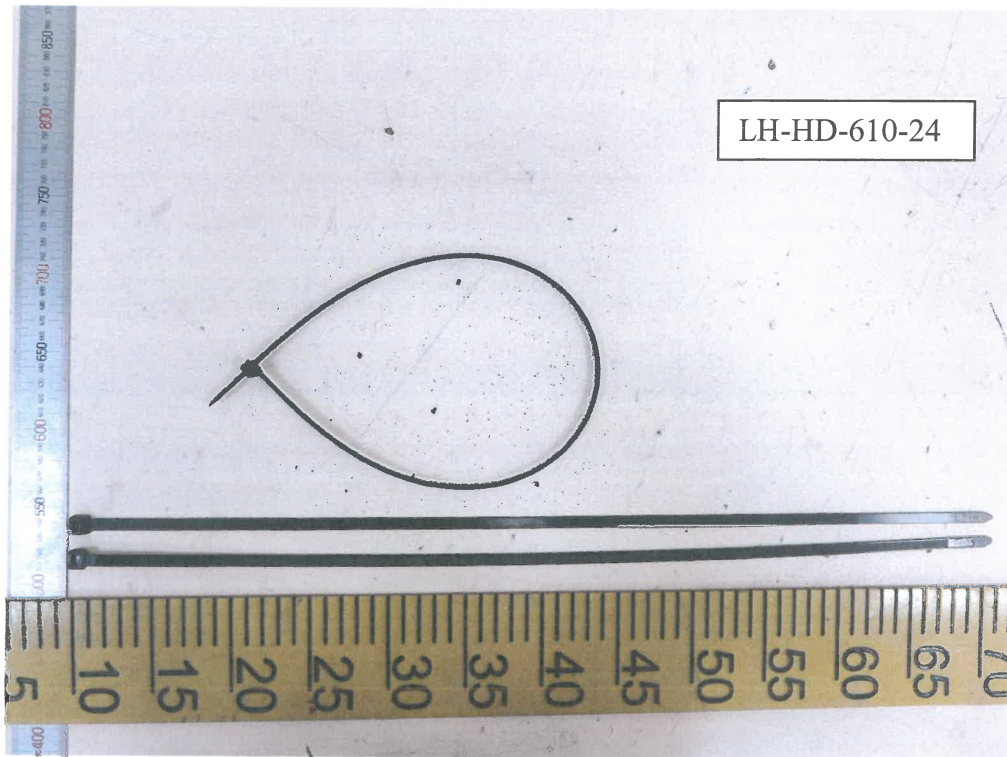
Report Number: 15055561 017

Model: LH-M series; LH-S series; LH-HD series; LH-EHD series; LH-HSD series



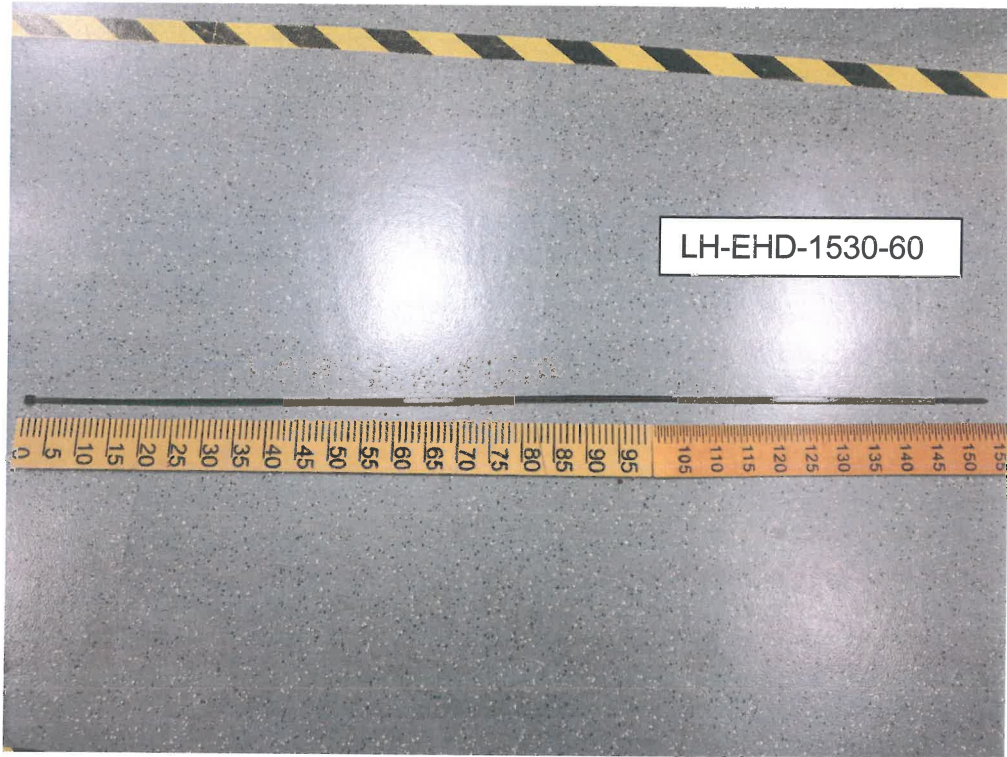
Report Number: 15055561 017

Model: LH-M series; LH-S series; LH-HD series; LH-EHD series; LH-HSD series



Report Number: 15055561 017

Model: LH-M series; LH-S series; LH-HD series; LH-EHD series; LH-HSD series



Report Number: 15055561 017

Model: LH-M series; LH-S series; LH-HD series; LH-EHD series; LH-HSD series

