

Fire Fighter Safety Switch For Solar Building

BFS-S Series



www.beny.com

ZBENY

Application

ZBENY The BFS-S Series FireFighter Safety Switch is a DC disconnect solution for solar rooftop fire protection. Provide DC power mechanical and complete isolation in the event of a fault. Make a safe area and operating space to protect the firefighter from DC electric shock.

*As the firefighter cut off the AC power in the house, the safety switch will disconnect the DC power at the same time.

*Over temperature protection

*IP66 aluminum durable enclosure

*Plug and Play easy installation

*Emergency button for 100% disconnect

Features

IP66 aluminum enclosure with breathing valve



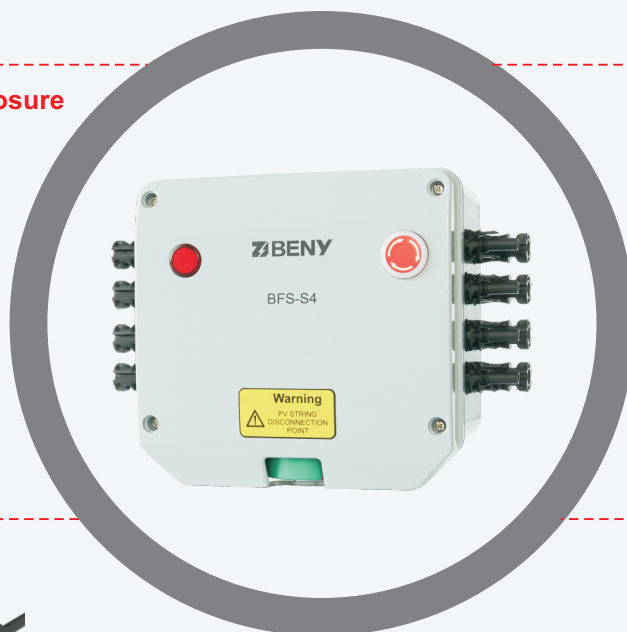
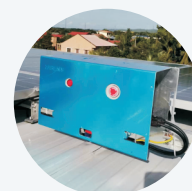
UI508i listed and IEC PV2 DC switch







Genuine MC4 Plug and Play



Protection cover for rooftop installation is available

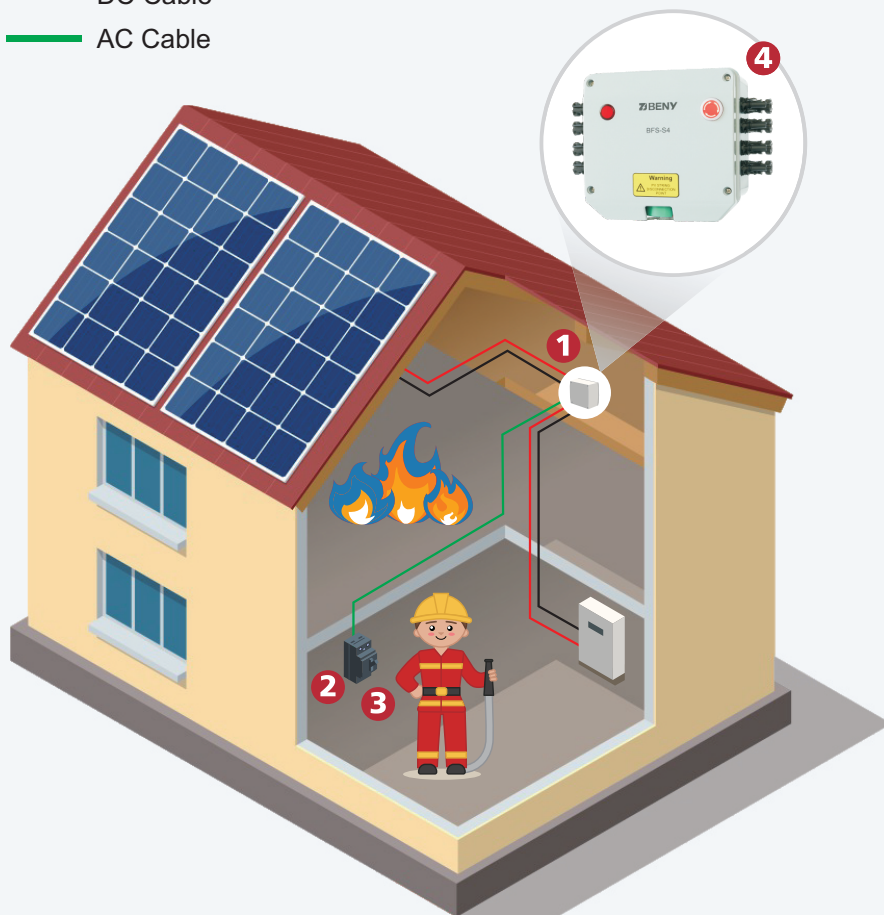


Specifications

Models	BFS-S			
Max String Voltage(Vdc)	800V,1000V,1350,1500V			
Max String Current(A)	50A			
Models	BFS-S1	BFS-S2	BFS-S3	BFS-S4
Number of Strings	1 string	2 strings	3 strings	4 strings
				
Operating Voltage	90Vac-260Vac			
Nominal Voltage	220Vac			
Nominal Current	30mA			
Start up Current	average 100mA			
Switch on Action Current	Max 300mA			
Standard Compliance	IEC / EN 60947-3			
Protection Degree	IP66			
Storage Temperature Allowed Between	-40°C~+85°C			
Operating Temperature Range	-20°C~+50°C			
Maximum Operating Temperature Before Automatic Switch OFF	+85°C			
Protection Level	Class II			
Mechanical Endurance	9700			
Electrical Endurance	300			

How the solution works?

- DC Cable +
- DC Cable -
- AC Cable



1 Over Temperature Protection Automatic Shutdown

When a temperature over 85 is detected, the fire safety switch disconnects and isolates DC

2 Main AC Power Shutdown by Manual

The fireman need to shutdown the AC power and make a safe zone without any risks of electric shock, especially in the house with solar power system. After the AC power loss, the fire safety switch complete isolates the DC power.

No need to be rooftop and operate the DC switch.

3 AC Power Loss triggers DC Power OFF Automatic

When there is any failures lead AC power loss, the fire safety switch will automatic OFF and isolate the solar PV power to make safety zone for firefighters at the mean time.

4 In the case the Firefighter Safety Switch is installed on the rooftop, Firefighter on rooftop presses and OFF the emergency switch on the box. That keeps DC power isolation and disconnect even the AC power is back.

