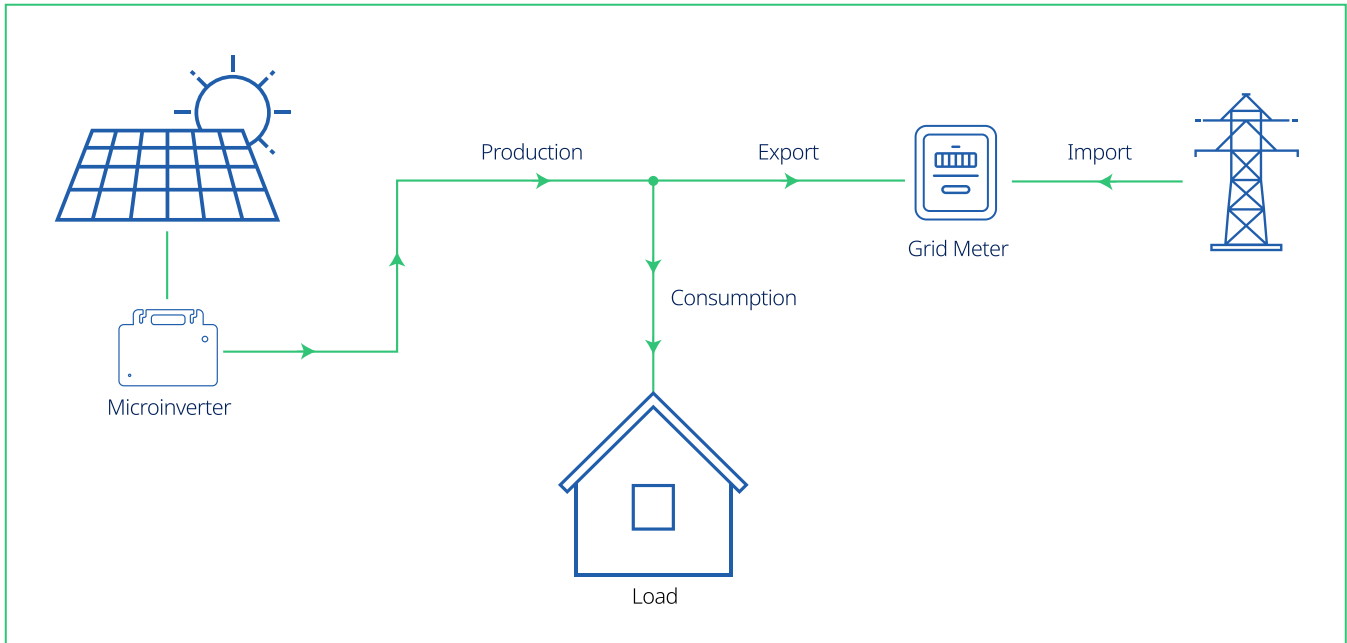
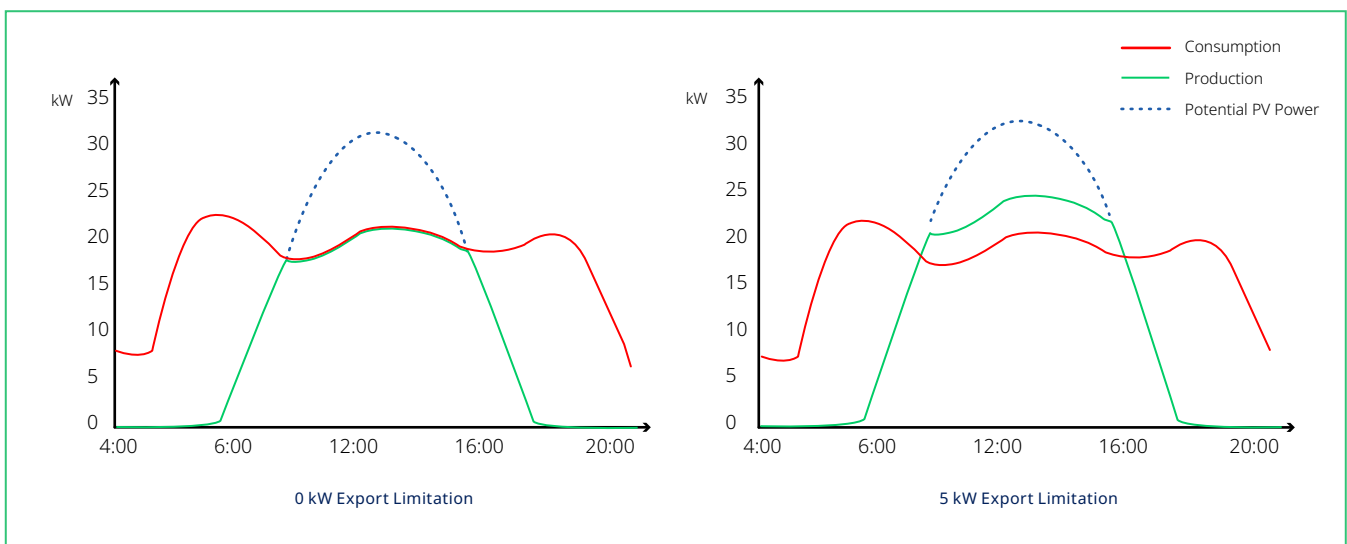


Smart Power Export Management System



Hoymiles Smart Power Export Management is an intelligent and reliable solution for managing the amount of power exported to the grid. It consists of the smart meter, the Hoymiles Gateway DTU-Pro (or DTU-Pro-S), and the Hoymiles microinverter. The meter measures and communicates export or load consumption values, and the gateway DTU dynamically adjusts PV power production according to meter measurements.

This solution allows the meter to be installed either on the load side or the grid side. But to display the PV production accurately, the meter needs to be installed at the output of the PV system. Using this solution, users can have a larger installation without violating grid export regulations and to trade PV production online based on the data contained in the S-Miles Cloud, maximizing the profit made on solar power generation.



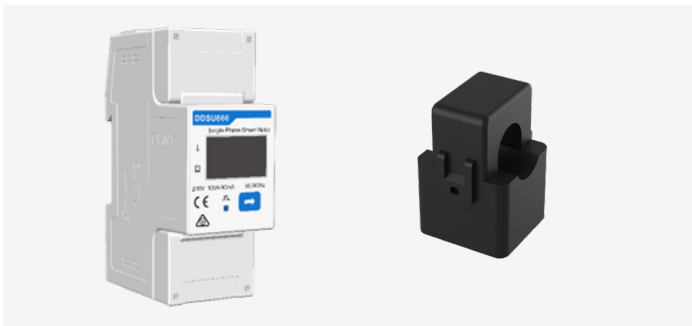
Load consumption and PV production curves throughout the day

System Composition



DTU-Pro/DTU-Pro-S

DTU is the control center for the export management solution and is responsible for receiving data from the meter and adjusting the microinverter's output power.



Single-phase electric meter (With 100A Current Transformer)

Single-phase electricity meter with the external current transformer can be used to measure the PV power production, load consumption or export power.

Suitable for single-phase power grid



Three-phase electricity meter (With 100/250 A Current Transformer)

Three-phase electricity meter with the external current transformer can be used to measure the PV power production, load consumption or export power. With their 250 A CT, three-phase meters are suitable for measuring larger currents.

Suitable for three-phase power grid

Technical Specifications

Model (Meter)	DDSU666 (CT-100 A)	DTSU666 (CT-3 × 100 A)	DTSU666 (CT-3 × 250 A)
Power Supply			
Grid type	1P2W	3P4W	
Input voltage (phase voltage)	154 Vac - 286 Vac	154 Vac - 253 Vac	
Power consumption	≤ 1.5 W		
Measuring Range			
Phase voltage	154 Vac - 286 Vac	154 Vac - 253 V ac	
Current	0 - 100 A	0 - 100 A	0 - 250 A
Measuring Accuracy			
$0.01 I_n \leq I < 0.05 I_n^1$			±1.5 %
$0.05 I_n \leq I \leq I_n^1$			±1.0 %
Communication			
Interface	RS485		
Communication protocol	Modbus-RTU		
Mechanical Data			
Wiring type ²	Via-CT		
Ambient temperature range	-25 °C - 70 °C		
Dimensions (W × H × D)	36 x 100 x 65 mm	72 x 100 x 65 mm	
Mounting Type	DIN35 Rail		
CT Data			
Thread	Single turn		
Install	Buckle		
Ambient temperature range	-25 °C - 70 °C		
Dimensions (W × H × D)	30 x 45 x 32 mm	44 x 77 x 33 mm	
Cable length	6 m		

1: Secondary rated current of the current transformer.

2: Note that three-phase CTs and single-phase CTs can not be used interchangeably. Single-phase CT work only with single-phase meters.

Unit: mm

